

Construction Phasing

This project is expected to be built in five phases beginning in March 2023 and completed in spring of 2024. In general 156th Street will be constructed in segmental closures and Pacific Street will be constructed under traffic. Access to properties will be maintained at all times but may be limited depending on construction activities.

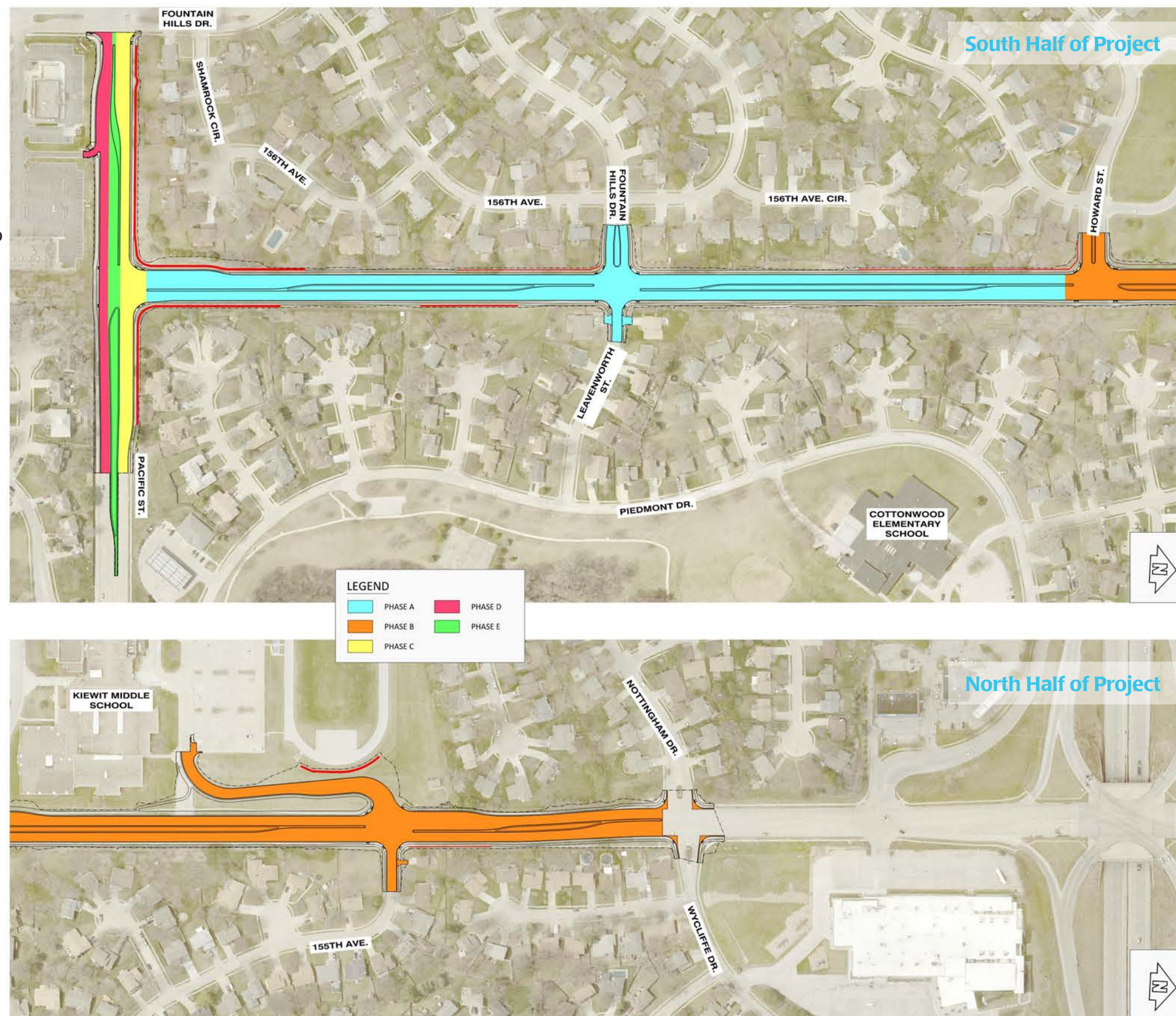
Phase A: 156th Street from Pacific Street to Howard Street will be closed. Local traffic from Howard Street to Wycliffe Drive will be maintained to provide access to the 155th Avenue, Kiewit Middle School, and Howard Street. Westbound Pacific Street traffic at 156th Street reduced to one lane for adjacent work.

Phase B: During summer break for Millard Public Schools 156th Street from Howard Street to Wycliffe Drive will be closed. Construction from 155th Avenue and the new Kiewit Middle School access north to Wycliffe Drive will be given priority in an effort to complete and reopen this segment to traffic prior to Millard Public Schools resuming classes.

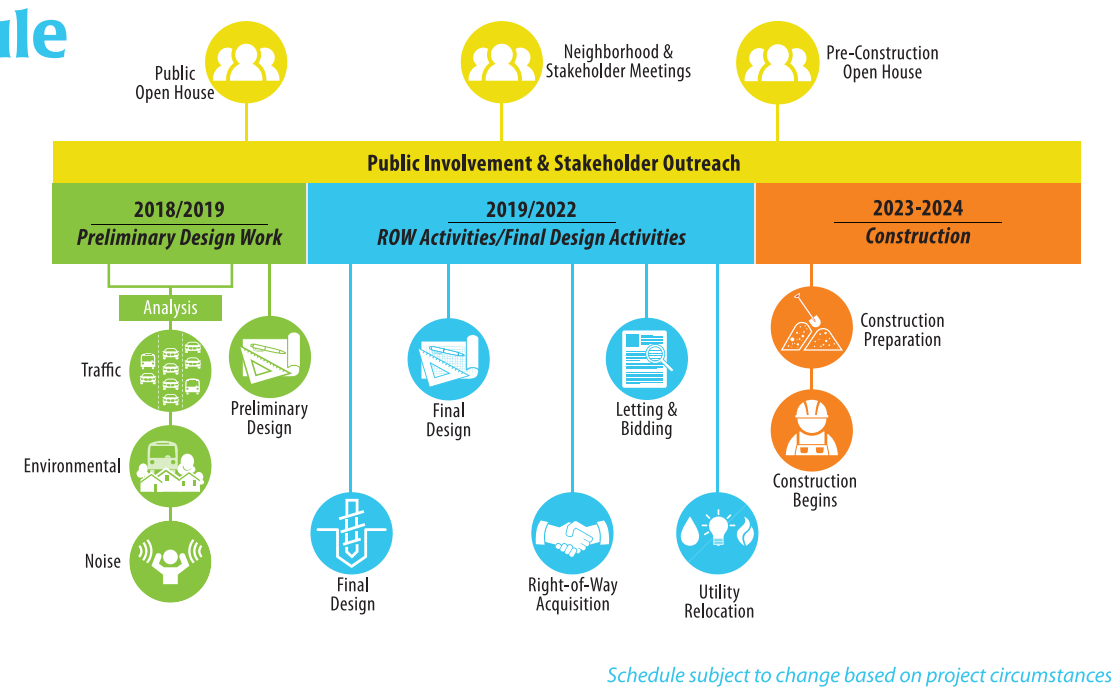
Phase C: Pacific Street traffic will be shifted head to head on the south side of the roadway. The north half of Pacific Street improvements will be constructed in this phase.

Phase D: Pacific Street traffic will be shifted head to head on the newly constructed pavement on the north side of the road. The south half of Pacific Street improvements will be constructed in this phase.

Phase E: During this phase construction of center lanes and medians will occur in the central portion of Pacific Street. Traffic will be open in both directions but shifted to outside lanes.



Project Schedule



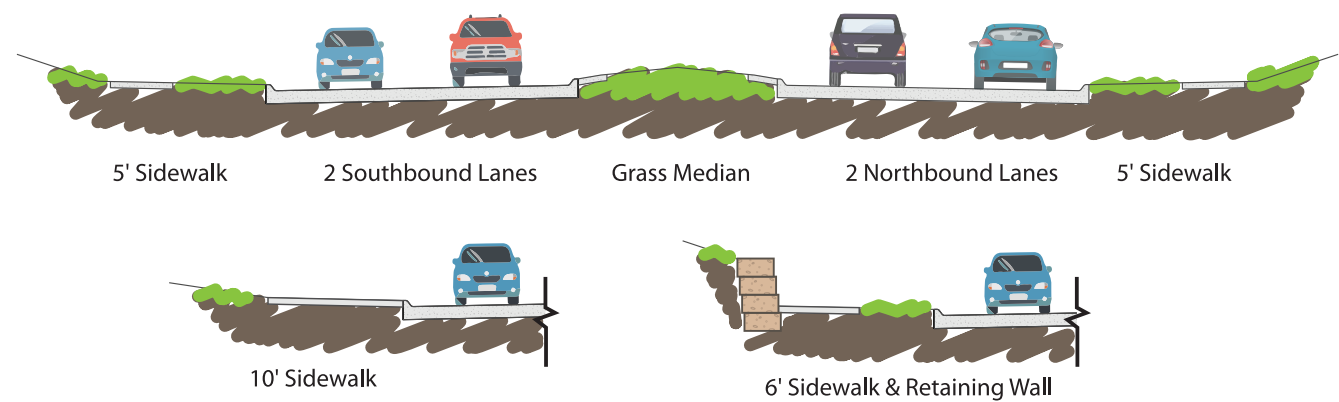
156th Street Reconstruction Project

Pacific Street to Wycliffe Drive
City of Omaha Project OPW 50157

Pre-Construction Meeting | Thursday, February 23, 2023

Typical Roadway Cross-Section

156TH STREET



PACIFIC STREET



Welcome!

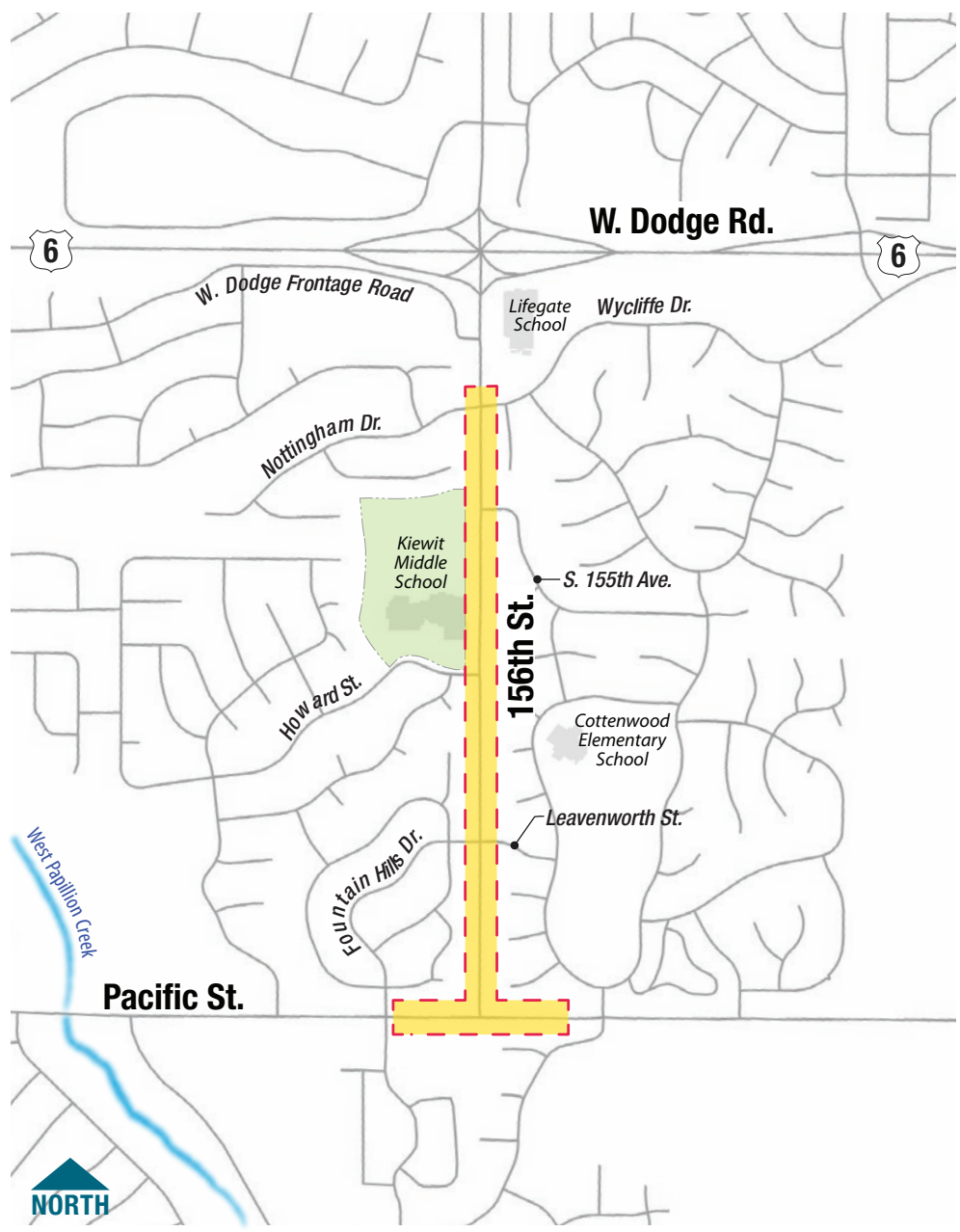
The purpose of today's meeting is to keep you informed of the upcoming improvements to 156th Street from Pacific Street to Wycliffe Drive, and to answer any questions you may have.

Project Background

This project will reconstruct 156th Street between Pacific Street and Wycliffe Drive to a four-lane urban roadway divided by a median. The project will include construction of dual left-turn lanes on Pacific Street.

Project Purpose

- ⚠ Increase safety
- ↔ Increase capacity
- ➡➡➡ Decrease congestion



Thank you for attending tonight's public meeting. Check in for periodic updates on the project at:
www.KeepOmahaMoving.com

Contact Us



Stephen Edloff
Project Manager, Public Works Division,
City of Omaha
Phone: 402-444-5220
Email: Stephen.Edloff@cityofomaha.org

