



**156TH STREET
RECONSTRUCTION –
PACIFIC ST. TO WYCLIFFE DR.**
PRE-CONSTRUCTION MEETING

February 23, 2023



156TH STREET RECONSTRUCTION PROJECT

Pacific Street to Wycliffe Drive

City of Omaha Project OPW 50157

AGENDA

- Introductions
- Project Update
- Construction Phasing
- Stay Informed



INTRODUCTIONS

CITY OF OMAHA

- City Engineer
- Design Engineer
- Project Manager
- Traffic Engineer
- ROW Staff
- Construction Manager

CONSULTANT/CONTRACT OR

- Design Consultant-
Felsburg Holt & Ullevig
- Construction Engineering-
HGM Associates
- Contractor-
TAB Construction



PROJECT UPDATE

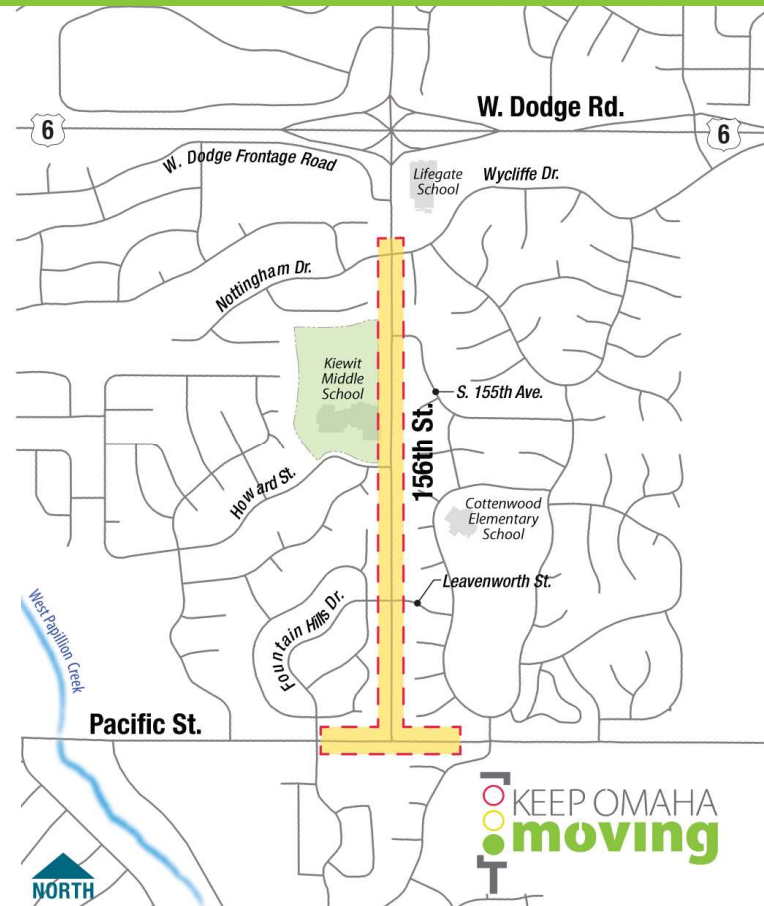
Project Purpose

- ⚠ Increase safety
- ↔ Increase capacity
- Decrease congestion

Project Background

The project will:

- Widen 156th to a 4-lane divided urban section from Pacific Street to Wycliffe Drive
- Add dual eastbound left turn lanes at Pacific Street
- New turn lanes, sidewalk and traffic signals



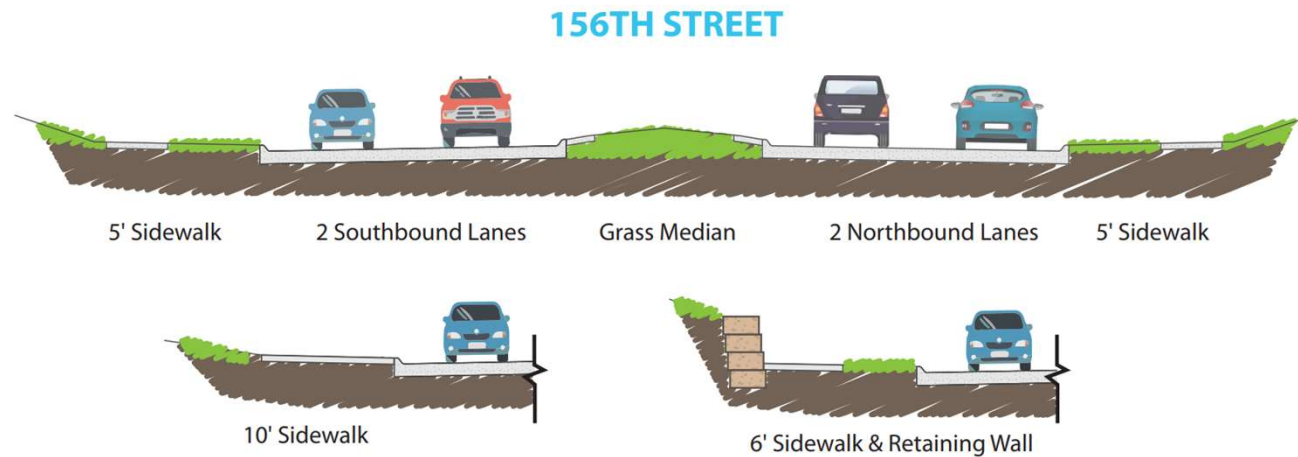
This project will widen 156th Street to a four-lane divided urban roadway from Pacific Street to the existing four-lane urban section at Nottingham Drive/Wycliffe Drive.

At the Pacific Street intersection, 156th Street will be widened to accommodate southbound dual left and dual right turn lanes. Pacific Street will also be widened to accommodate dual eastbound left turn lanes.

Included in the project are improvements to the Kiewit Middle School drive on 156th Street providing access to their north parking. This access will be relocated north to the 155th Avenue intersection where a traffic signal will be provided.

Sidewalks, pedestrian crossings, storm sewers, lighting and retaining walls will also be constructed along the 156th Street corridor.

PROJECT UPDATE



This graphic shows what the typical cross section of the proposed 4-lane divided roadway would look like on 156th Street. It will include 2-lanes in each direction separated by a raised median and a 5 foot sidewalk on both sides of 156th Street.

In front of Kiewit Middle School, the sidewalk will be 10' wide.

There are also areas along the project requiring retaining walls. In these areas a 6 foot sidewalk will be constructed.

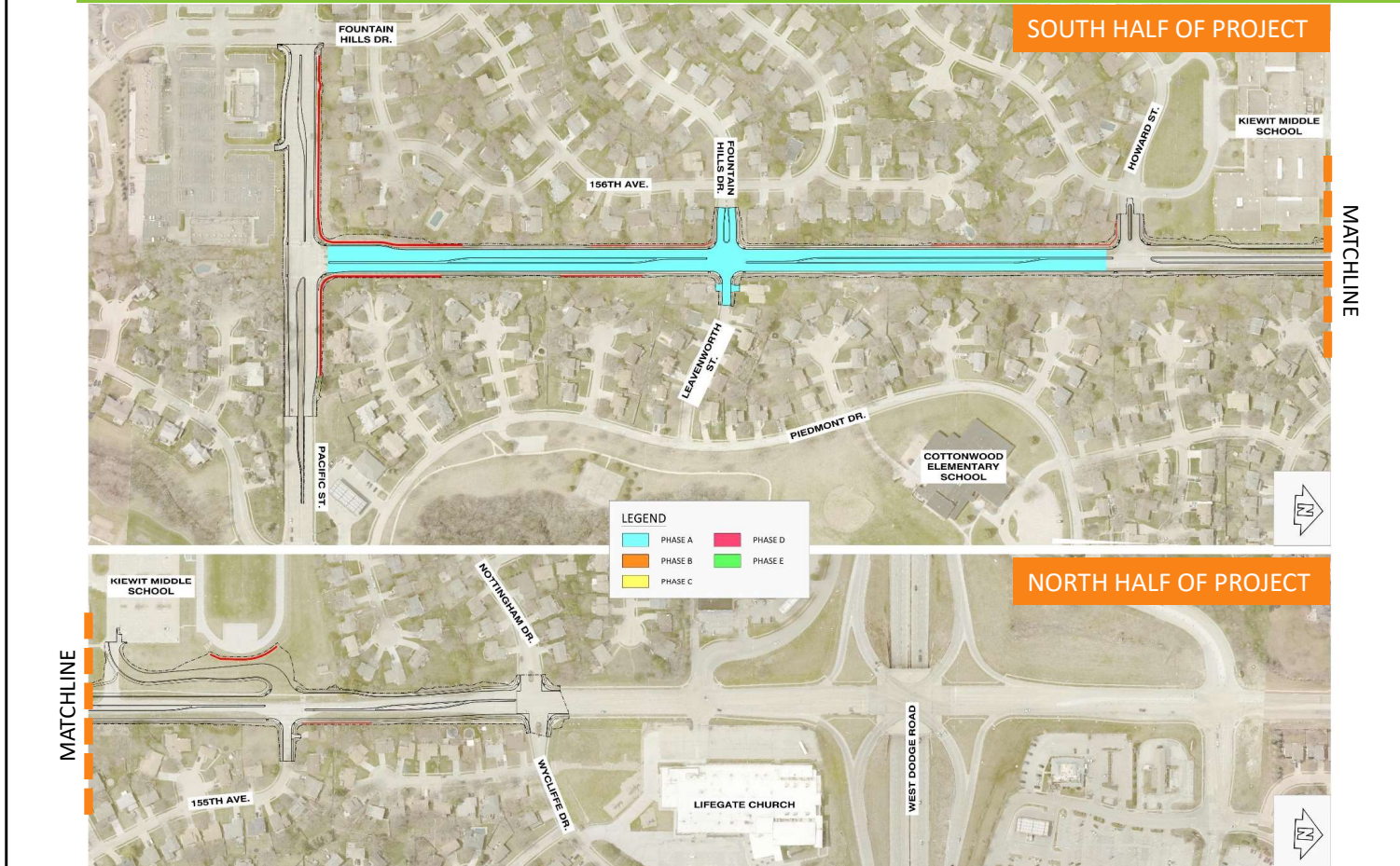
PROJECT UPDATE



The Pacific Street cross section, which currently has a single eastbound left turn lane onto 156th Street, will be widened to accommodate eastbound dual left-turn lanes.

The concrete retaining wall along the south side of Pacific Street will remain in place and the block retaining wall on the north side of Pacific Street will be reconstructed in the same location.

CONSTRUCTION – PHASE A

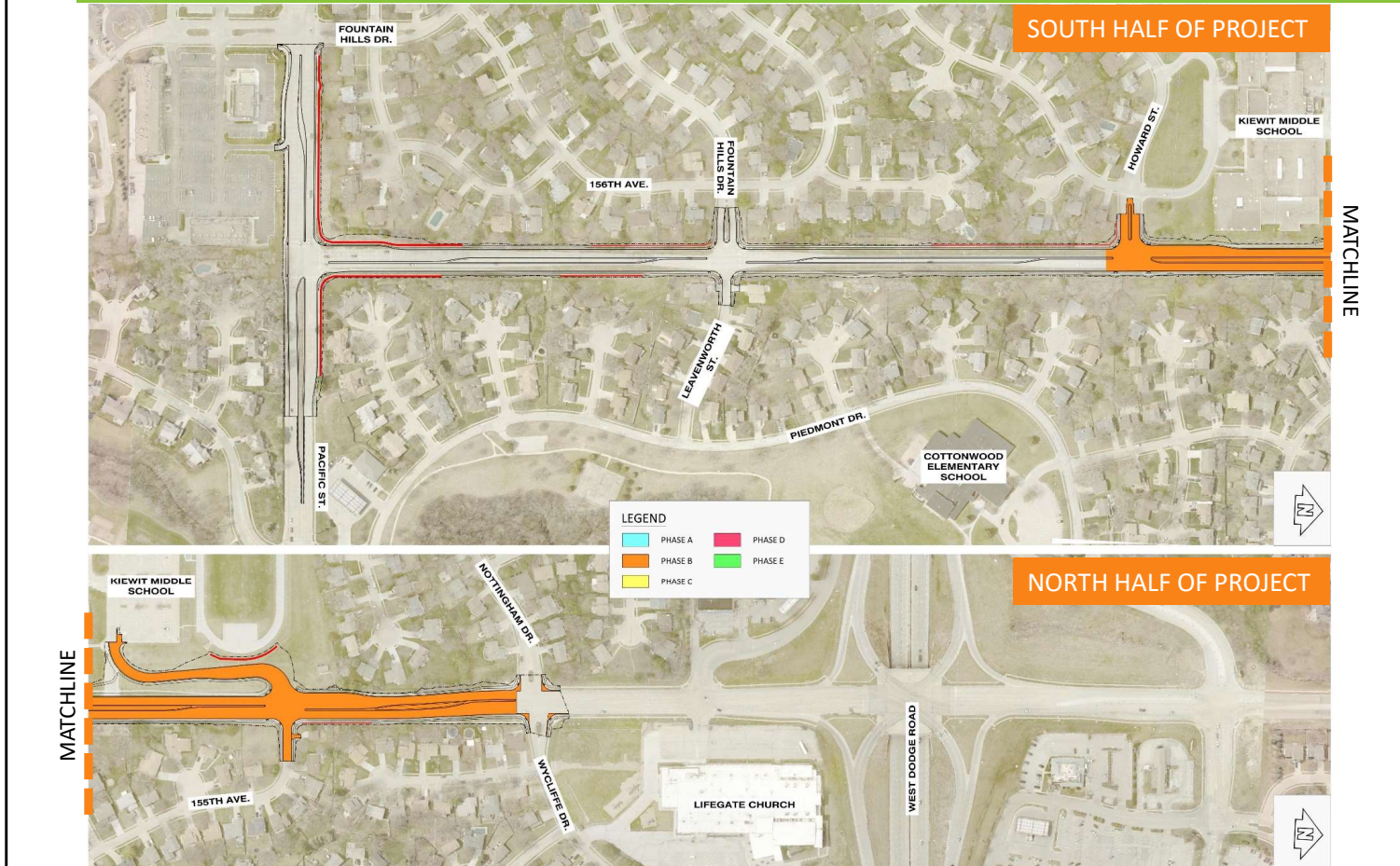


The next few slides show the proposed project phasing. Pacific Street is on the left with West Dodge Road on the Right.

This project is expected to be built in five phases beginning in March 2023 and completed in spring of 2024. In general, 156th Street will be constructed in segmental closures and Pacific Street will be constructed under traffic. Access to properties will be maintained at all times but may be limited depending on construction activities.

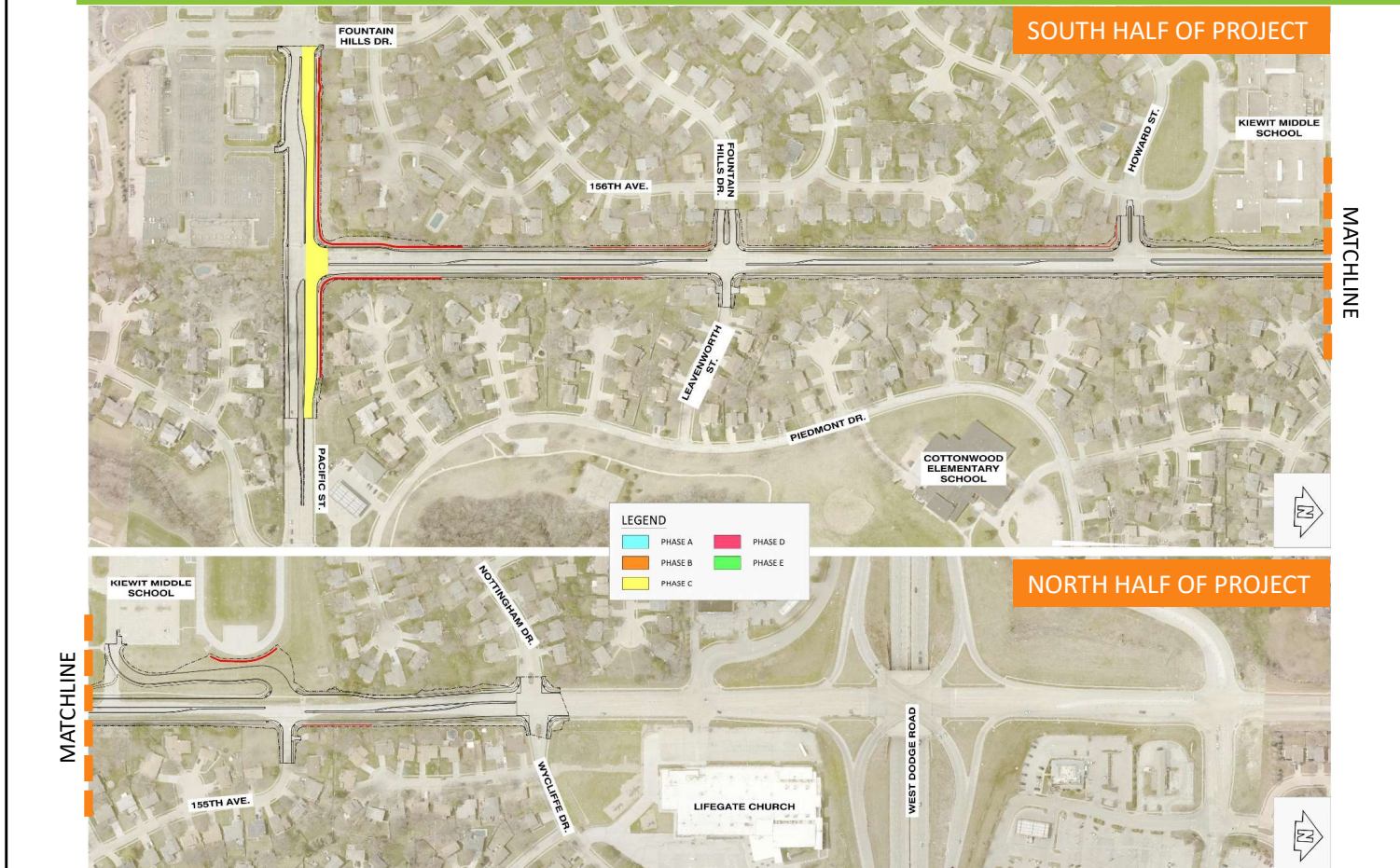
The first phase of construction, shown here in Blue and labelled Phase A, will reconstruct 156th Street from Pacific Street to Howard Street and will be closed to traffic. Local traffic from Howard Street north to Wycliffe Drive on 156th will be maintained to provide access to 155th Avenue, Kiewit Middle School, and Howard Street. Westbound Pacific Street traffic at 156th Street will be reduced to one lane for adjacent work.

CONSTRUCTION – PHASE B



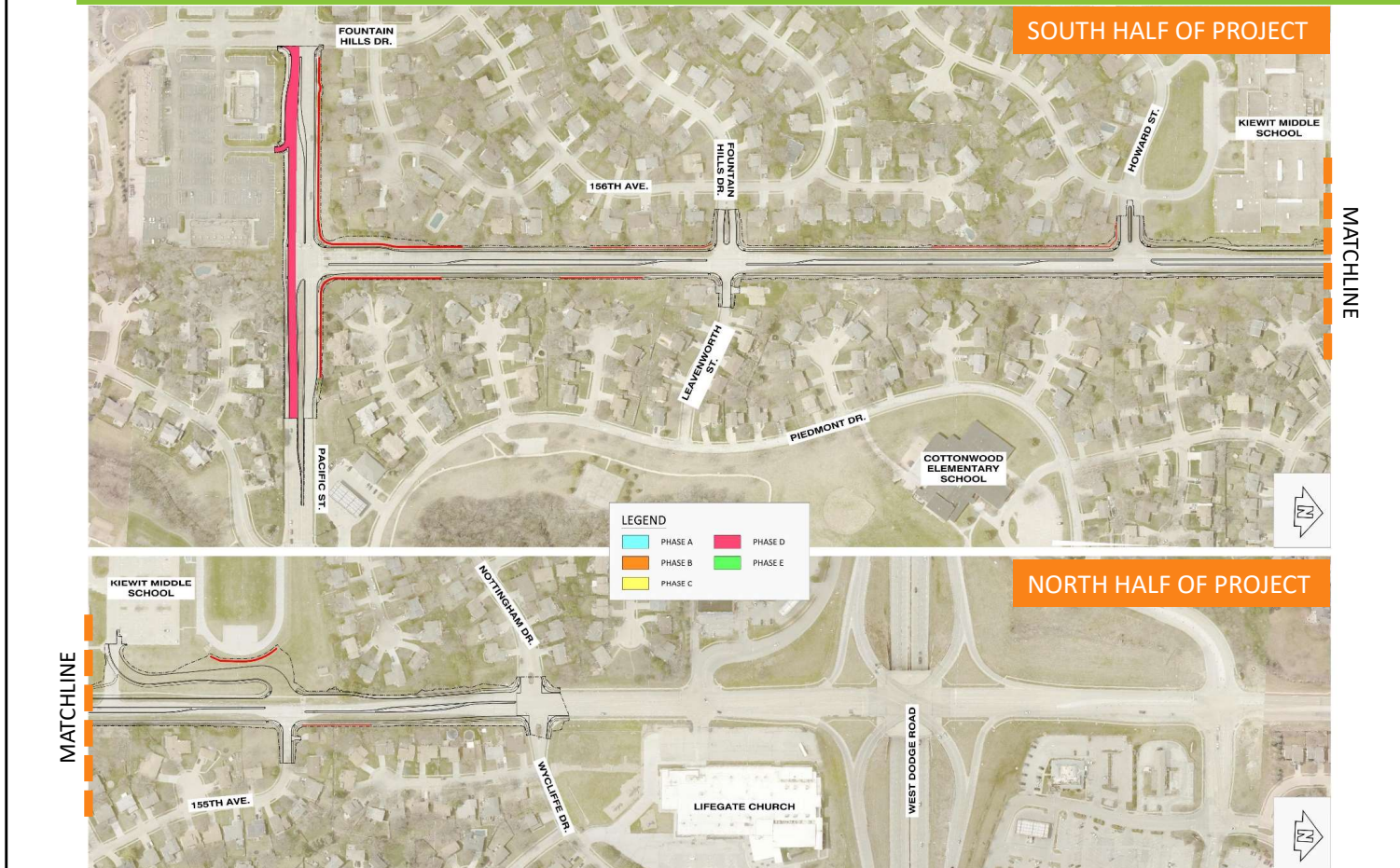
In Phase B, shown in Orange, 156th Street from Howard Street to Wycliffe Drive will be closed to traffic and reconstructed. The start of the phase will not be allowed to start until Millard Public Schools goes on summer break. This phase has several subphases to ensure at least 2-lanes of 156th Street can be completed and reopened prior to Kiewit Middle School starting in the August. The Contractor has until the Fall of 2023 to complete all of Phase B.

CONSTRUCTION – PHASE C



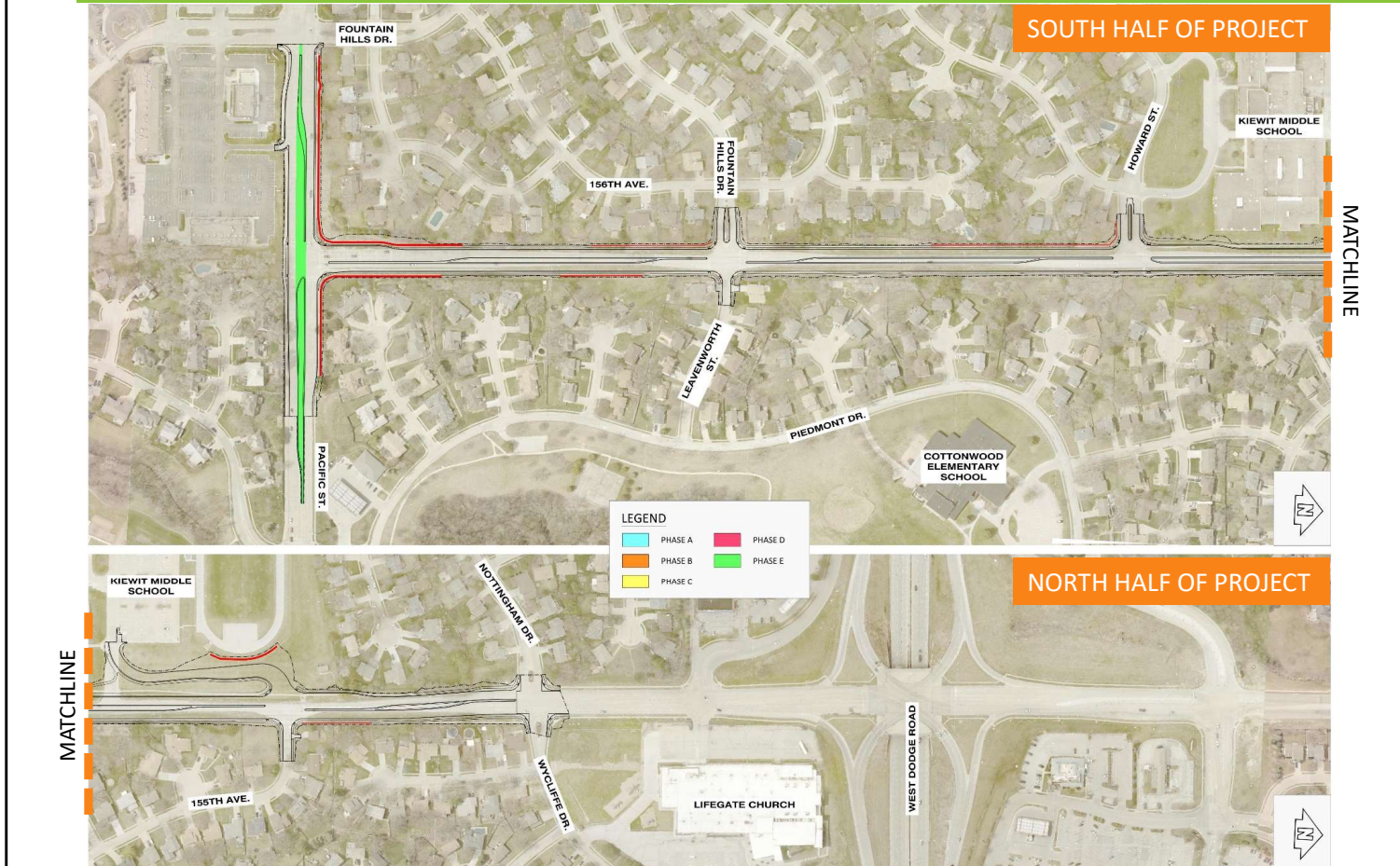
In Phase C, shown in Yellow, Pacific Street traffic will be shifted head-to-head on the south side of the roadway. The north half of Pacific Street improvements will then be constructed in this phase.

CONSTRUCTION – PHASE D



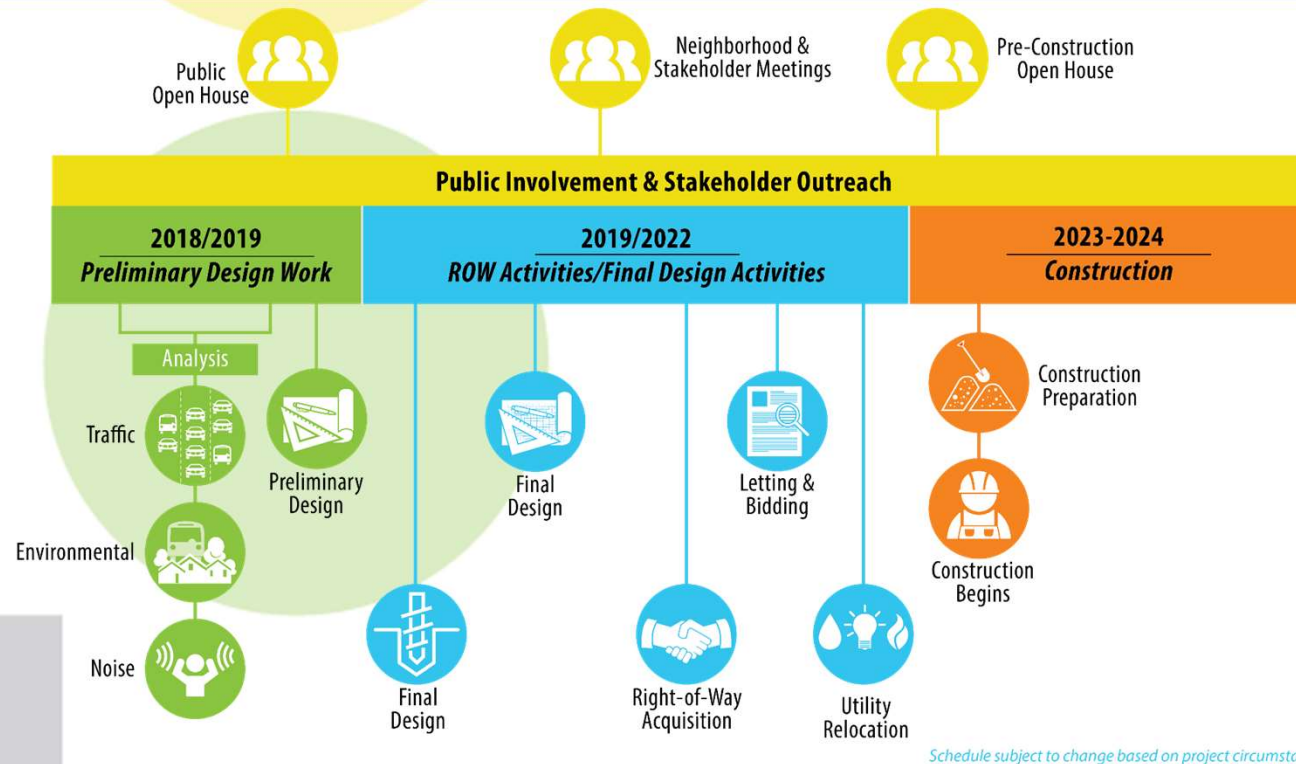
During Phase D, shown in Pink, traffic on Pacific Street will be shifted head-to-head on the newly constructed pavement on the north side of the road. The south half of Pacific Street will then be constructed.

CONSTRUCTION – PHASE E



The final phase, Phase E shown in Green, is construction of center lanes and medians in the central portion of Pacific Street. Traffic will be open in both directions for Pacific Street but shifted to outside lanes. The Contractor has until Late Spring of 2024 to complete this Phase.

SCHEDULE



Schedule subject to change based on project circumstances.



This schedule illustrates the key project milestones of the project. The Contractor is expected to begin work on March 6th of 2023 and scheduled to complete construction in the Late Spring of 2024.

THANK YOU FOR ATTENDING



STAY INFORMED

City of Omaha Contact:

Stephen Edloff

Project Manager, Public Works
Division

(402) 444-5220

Stephen.Edloff@cityofomaha.org



Here is how to stay up-to-date on the project. Log onto www.KeepOmahaMoving.com and navigate to the “Projects” tab at the top of the webpage and select 156th Street –Pacific Street to Wycliffe Drive. Here you will find the information presented tonight. All Future updates will be posted at this location.

In addition, your primary contact for this project is Stephen Edloff. He is the City of Omaha’s Construction Manager for this project

Thank you for your time.