



**72ND AND MAPLE
INTERSECTION
IMPROVEMENT PROJECT**

PRE-CONSTRUCTION MEETING

Wednesday January 29, 2020



WELCOME!

Please take a seat, the presentation will begin shortly, followed by an open house.



AGENDA

- Introductions
- Project Overview
- Construction Phasing
- Anticipated Schedule
- How To Stay Informed



INTRODUCTIONS

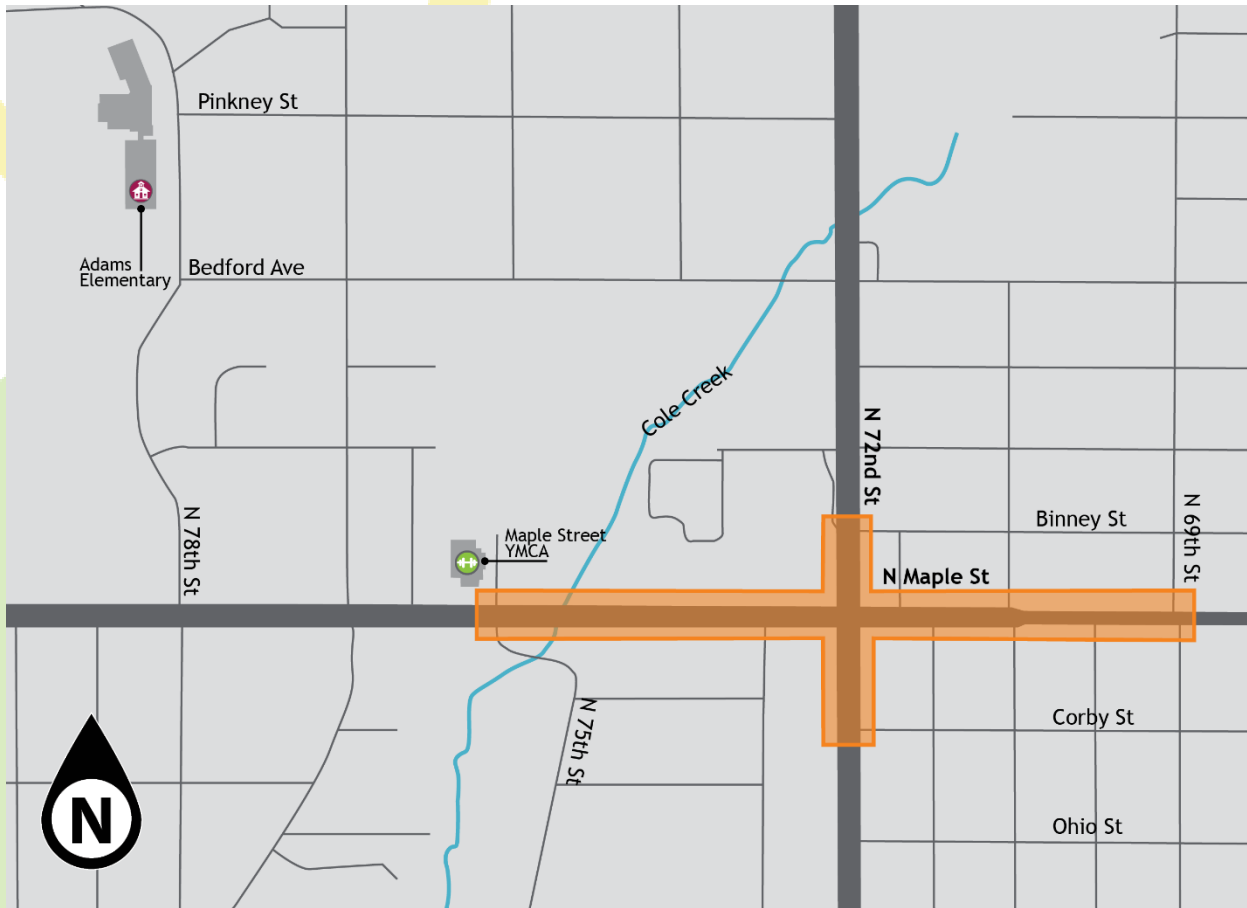
CITY OF OMAHA STAFF

- City Engineer
- Design Engineer
- Project Manager
- Traffic Engineer
- ROW Agents
- Construction Manager
- City Council

CONSULTANT/CONTRACTOR

- Design Engineer –
Alfred Benesch & Co.
- Construction Engineering
Consultant – Kirkham Michael
- Contractor –
Swain Construction





PROJECT OVERVIEW

72nd and Maple Street Intersection

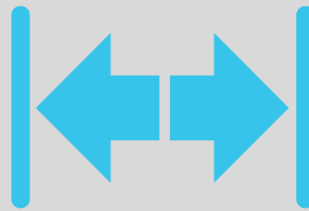


PROJECT PURPOSE

**IMPROVE
SAFETY**



**INCREASE
CAPACITY**



**DECREASE
CONGESTION**



**Current Daily
Traffic**

**30,100
vehicles**



**Projected
2040 Traffic**

**39,000
vehicles**



**Construction
Cost**

\$4 Million



**90% Federal
Funding**

**10% City
Funding**



IMPROVEMENTS

- Turn Lane Improvements on Maple
- Parking Improvements on East End
- Drainage Improvements



IMPACTS DURING CONSTRUCTION

- No Left Turns Allowed During Construction
- Lane Restrictions
- Temporary Closures Into Neighborhoods
- Temporary Restrictions to Business Access
- Bus Stop Changes Near 72nd

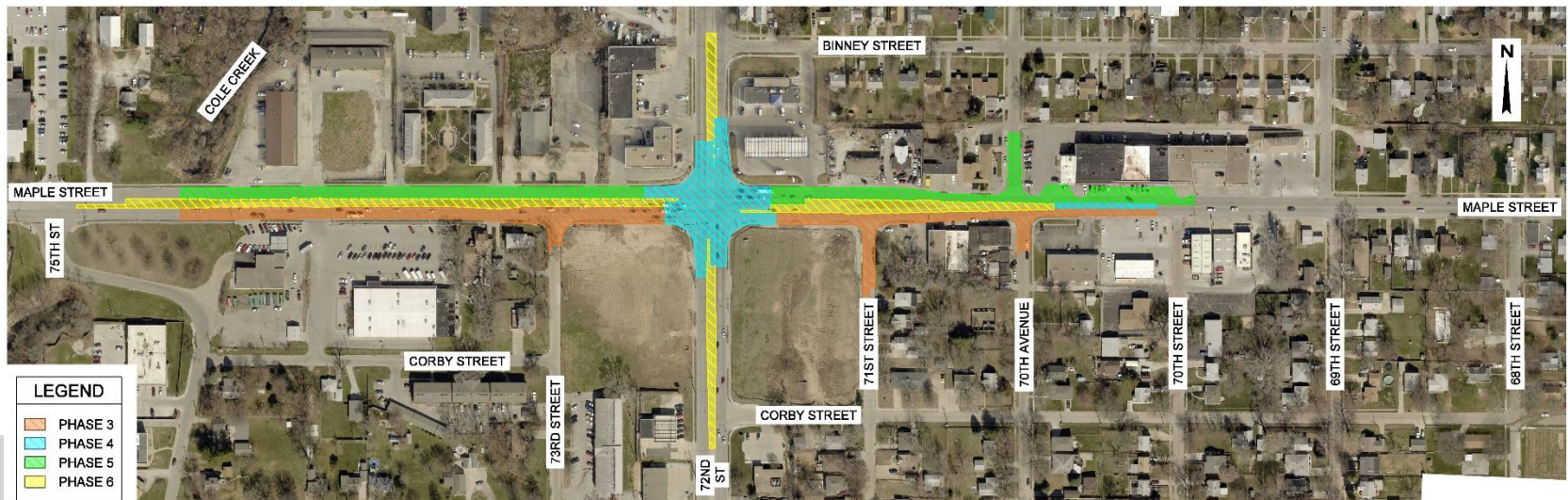
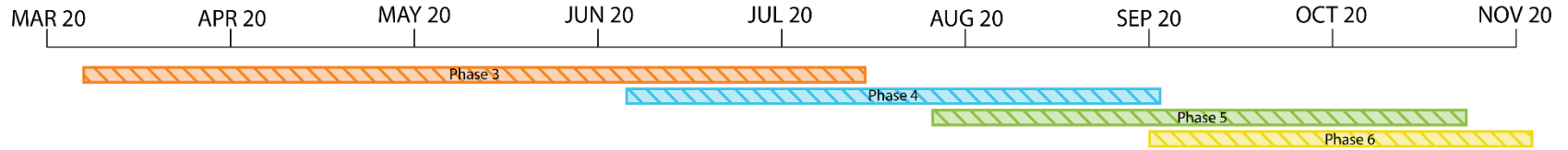


C.S.O. PROJECT & UTILITY WORK

- Sewer Separation Work Concluding in Early Spring
- Other Work Completed Prior to Project Start
 - Sewer Separation at 70th Ave
 - Water and Gas Main Replacements



PROJECT PHASING



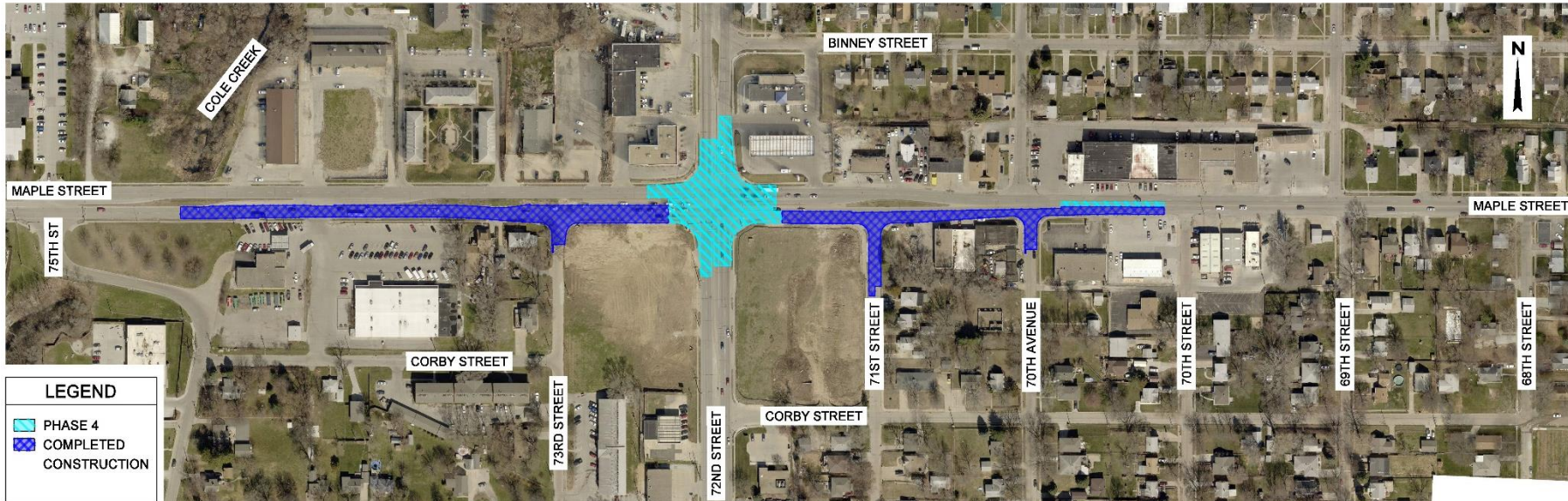
PHASE 3



- Construct South Half of Maple (Eastbound Lanes)
- Maple Traffic Head to Head on Existing North Half Pavement
- Removals, Storm Sewer, Paving, Drives, Sidewalks, Seed/Sod
- March to July



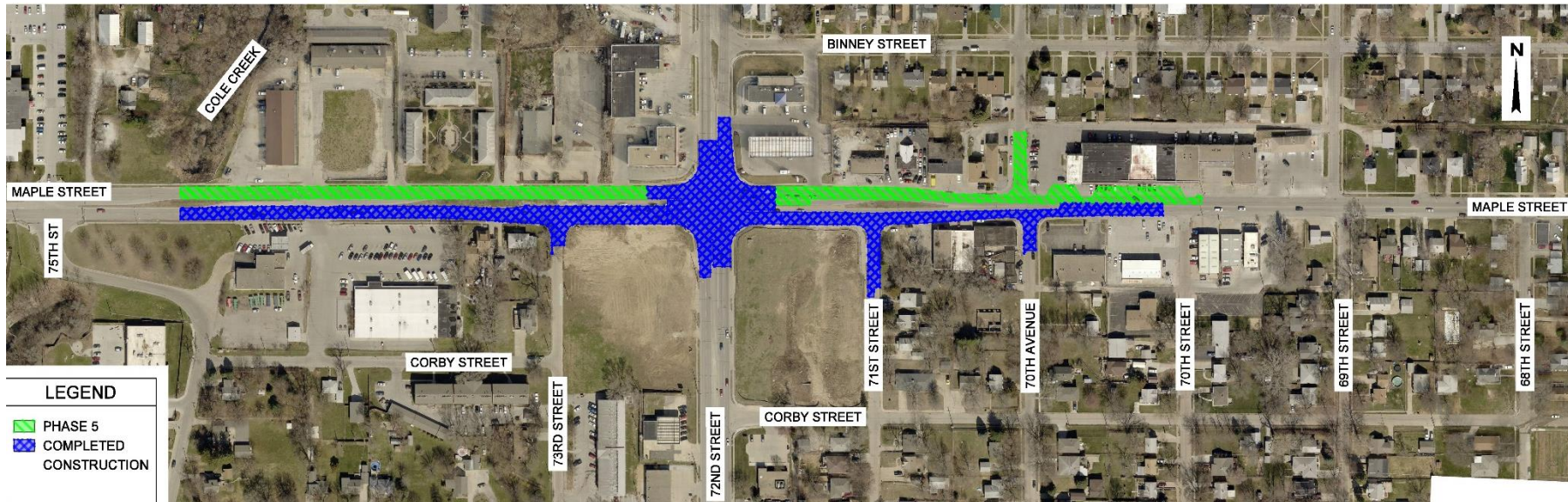
PHASE 4



- Construct All Work at 72nd Street Intersection
- Both Maple Traffic and 72nd Traffic to Shift Around Work Zones
- Removals, Paving, Drives, Sidewalks, Seed/Sod
- June to September



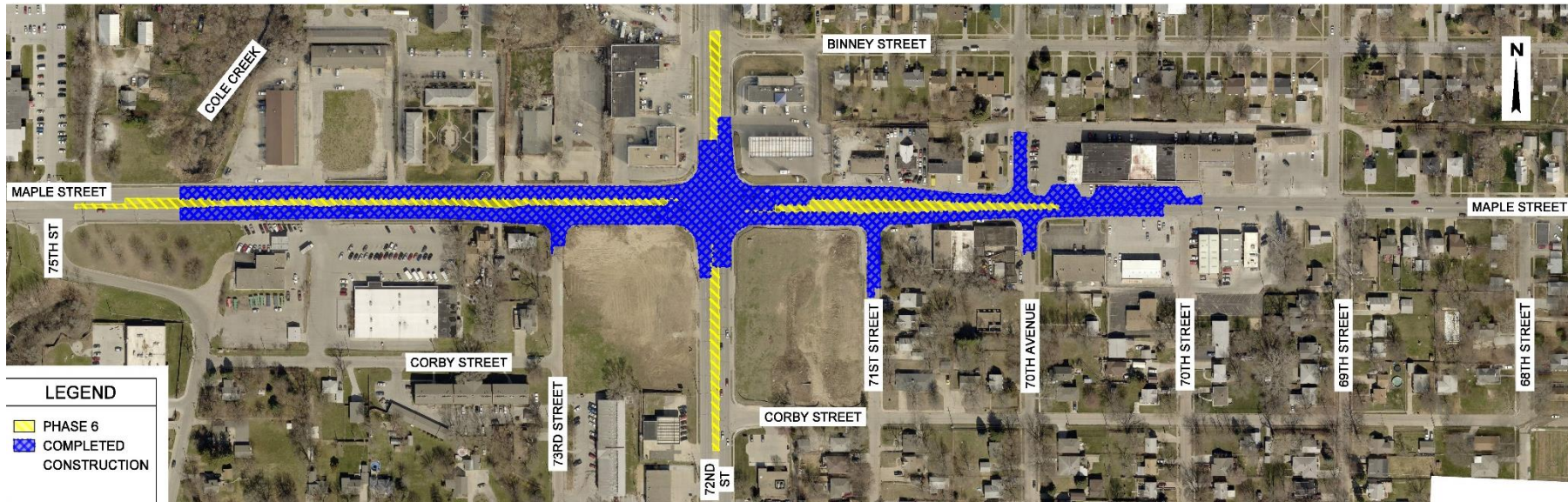
PHASE 5



- Construct North Half of Maple (Westbound Lanes)
- Maple Traffic Head to Head on New South Half Pavement
- Removals, Storm Sewer, Paving, Drives, Sidewalks, Seed/Sod
- August to November



PHASE 6



- Finish All Remaining Paving Work
- Construct the Median
- September to November



SCHEDULE

Business &
Stakeholder
Open House



Public
Open
House



We
are
here



Preconstruction
Open
House

Public Involvement & Stakeholder Outreach

2017

2018

2019

2020



Traffic



Preliminary
Design



Geotechnical



Environmental



Environmental
Approval



Final
Design



Right-of-Way
Activities



Letting &
Bidding



Utility Projects



Roadway
Construction
Preparation



Construction
Begins



OPEN HOUSE

- Visit tables around the outside of the room
 - Get a closer look at the project
 - Visit with project representatives
- Meeting will adjourn at 7:00pm
- Thank you for coming!



STAY INFORMED



- Sign-Up for Notifications
- Dan Sitorius, Project Manager
(402) 255-3844 or dsitorius@Kirkham.com
- Luke Jager, City Representative
(402) 444-5220 or luke.jager@cityofomaha.org

