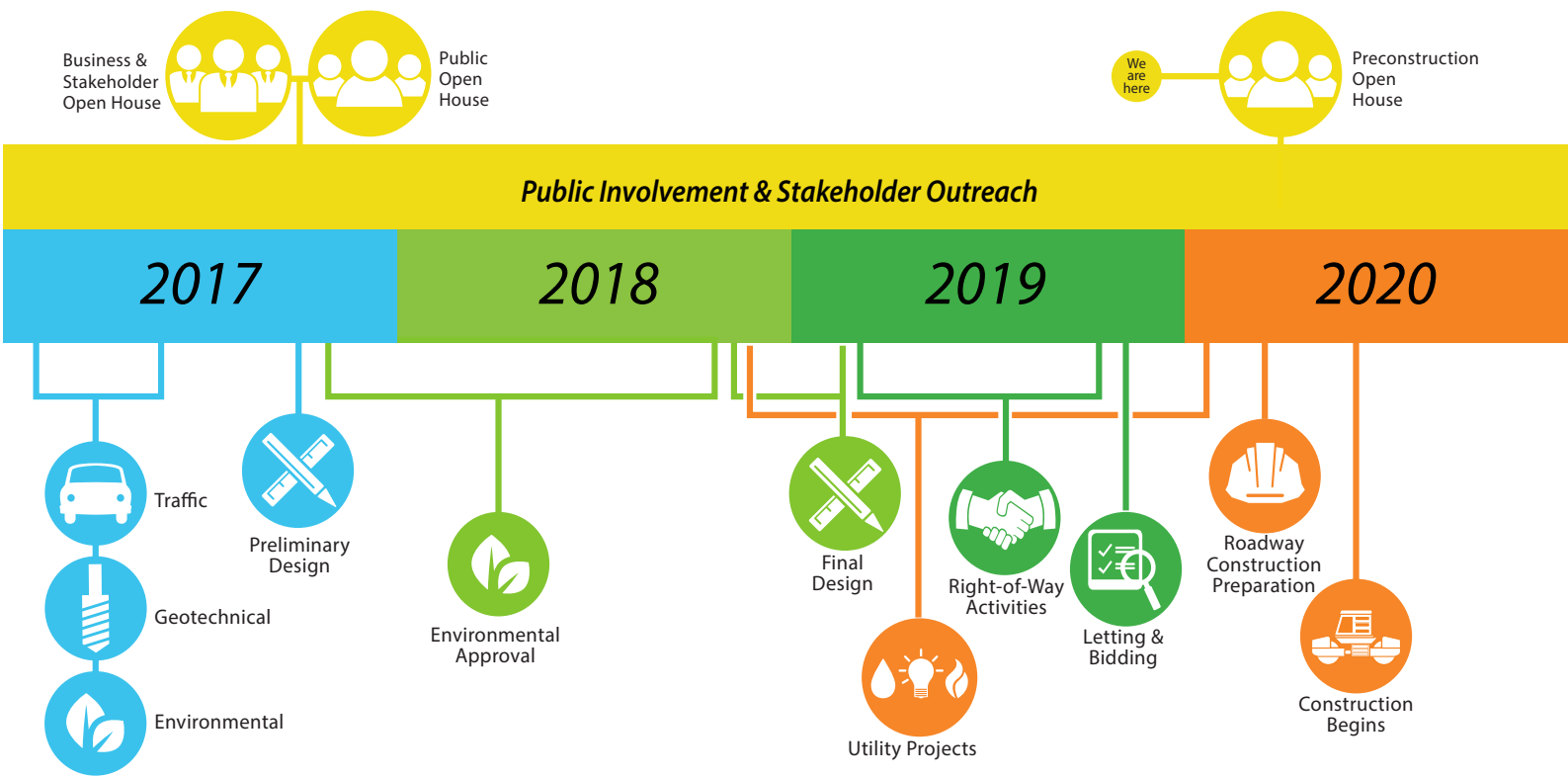


PROJECT SCHEDULE



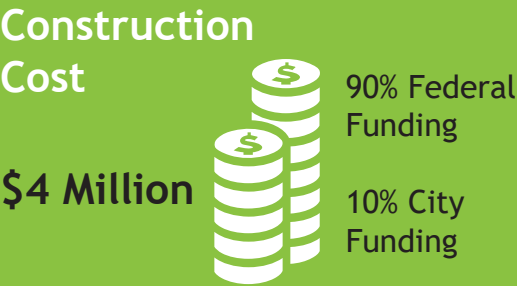
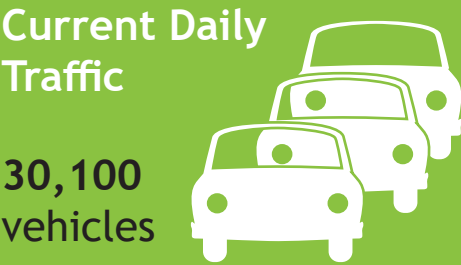
PROJECT CONTACTS

**Luke Jager, City Representative**  
City of Omaha Public Works  
402-444-5220  
luke.jager@cityofomaha.org

**Dan Sitorius, Project Manager**  
Kirkham Michael  
402-255-3844  
dsitorius@kirkham.com

Stay informed throughout construction by visiting [www.KeepOmahaMoving.com](http://www.KeepOmahaMoving.com) or emailing [info@keepomahamoving.com](mailto:info@keepomahamoving.com)

Project news, highlights and construction updates will be posted as they become available.



72nd St & Maple St Intersection Improvement, Omaha

HSIP-64-7(127); CN 22702

2020 PRE-CONSTRUCTION PUBLIC OPEN HOUSE

WEDNESDAY, JANUARY 29, 2020

5:30PM - 7:00PM  
Brief Presentation at 5:45PM

ADAMS ELEMENTARY SCHOOL  
3420 N 78th Street, Omaha, NE 68134

**WELCOME!**  
Welcome to the 72nd and Maple Street Intersection Improvement Project 2020 Pre-Construction Public Open House! The purpose of this meeting is to learn more about the construction phases and timelines planned for 2020.

**PROJECT OVERVIEW**  
The proposed project will reconstruct approximately 0.40 miles of Maple Street (Nebraska Highway 64 (N-64)). Additional left-turn lanes will be added to both eastbound and westbound Maple Street and medians will be reconstructed on all four legs of the intersection. Other improvements include sidewalks, curb ramps, storm sewer and curb inlets, retaining walls, traffic signals, lighting, guardrail and pavement markings.

**TRAFFIC DURING CONSTRUCTION**  
This project will be built in phases, with Maple Street left open to traffic as much as possible. Both 72nd Street and Maple Street will be reduced to one lane in each direction during different phases of construction. During some phases of work, left turns will not be permitted at the intersection. No marked detour will be provided. During construction, the City will coordinate with emergency services, Metro transit and other local events to maintain access as much as possible.



PROJECT PHASING AND SCHEDULE

