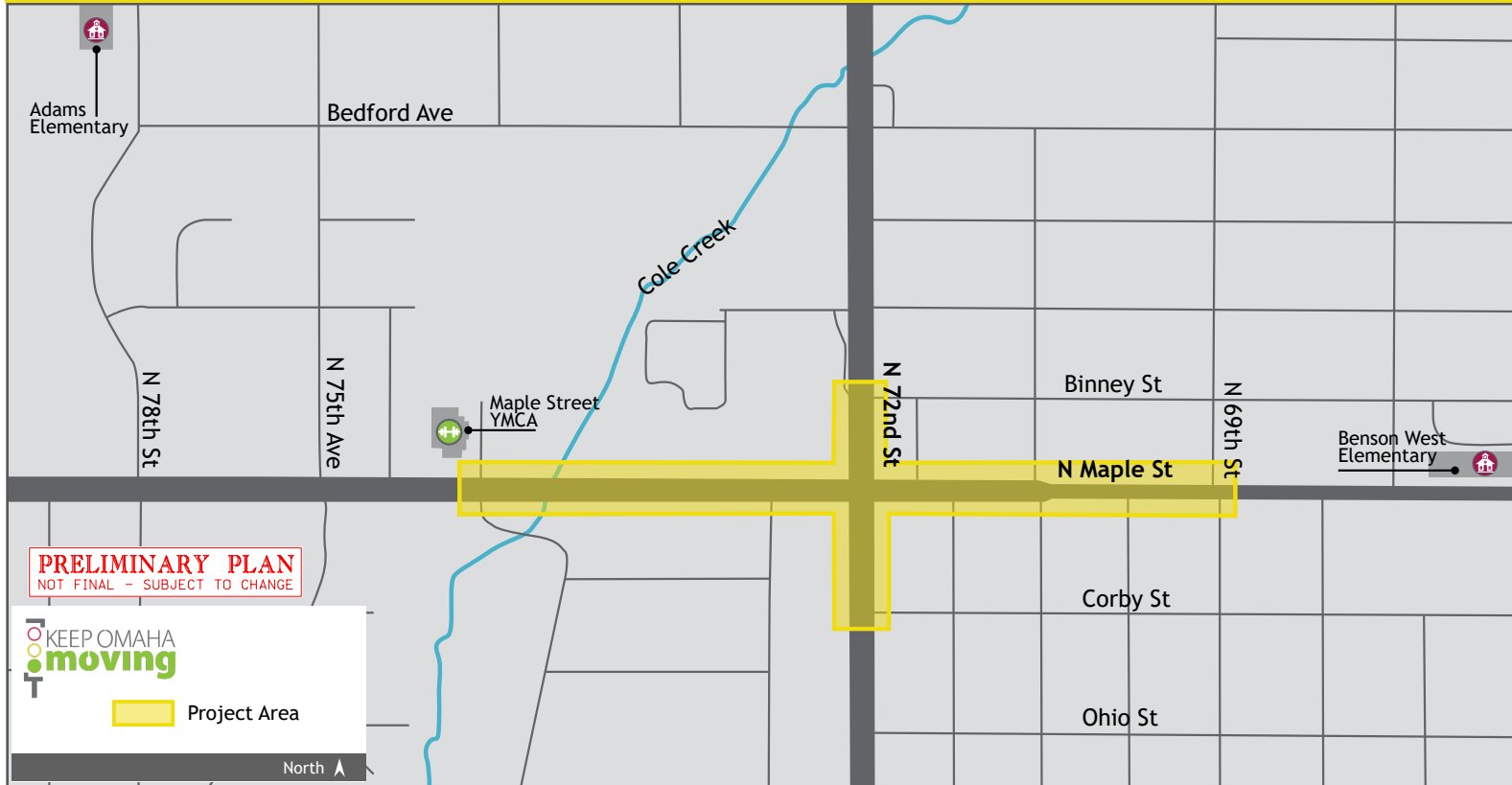


72nd St & Maple St Intersection Improvement, Omaha

HSIP-64-7(127); CN 22702




Public Open House: Thursday, August 31st, 2017 | Adams Elementary School



About the Project

The proposed project would reconstruct approximately 0.40 miles of Maple St (Nebraska Highway 64 (N-64)). Additional left-turn lanes would be added to both eastbound and westbound Maple Street and medians would be reconstructed on all four legs of the intersection. Other improvements include sidewalks, curb ramps, storm sewer and curb inlets, retaining walls, traffic signals, lighting, guardrail and pavement markings.

Project Purpose

-  Improve Safety
-  Increase Capacity
-  Decrease Congestion

Traffic During Construction

This project would be built in phases, with the area left open to traffic except for short-term closures when required. Both 72nd Street and Maple Street would be reduced to one lane in each direction during different phases of construction. During some phases of work, left turns would not be permitted at the intersection. No marked detour would be provided.

During construction, the City would coordinate with emergency services, Metro transit and other local events to maintain access as much as possible.

Current Daily Traffic

30,100
vehicles



Projected 2040 Traffic

39,000
vehicles



Estimated Construction Cost

\$3-4 Million



90% Federal
Funding
10% City
Funding

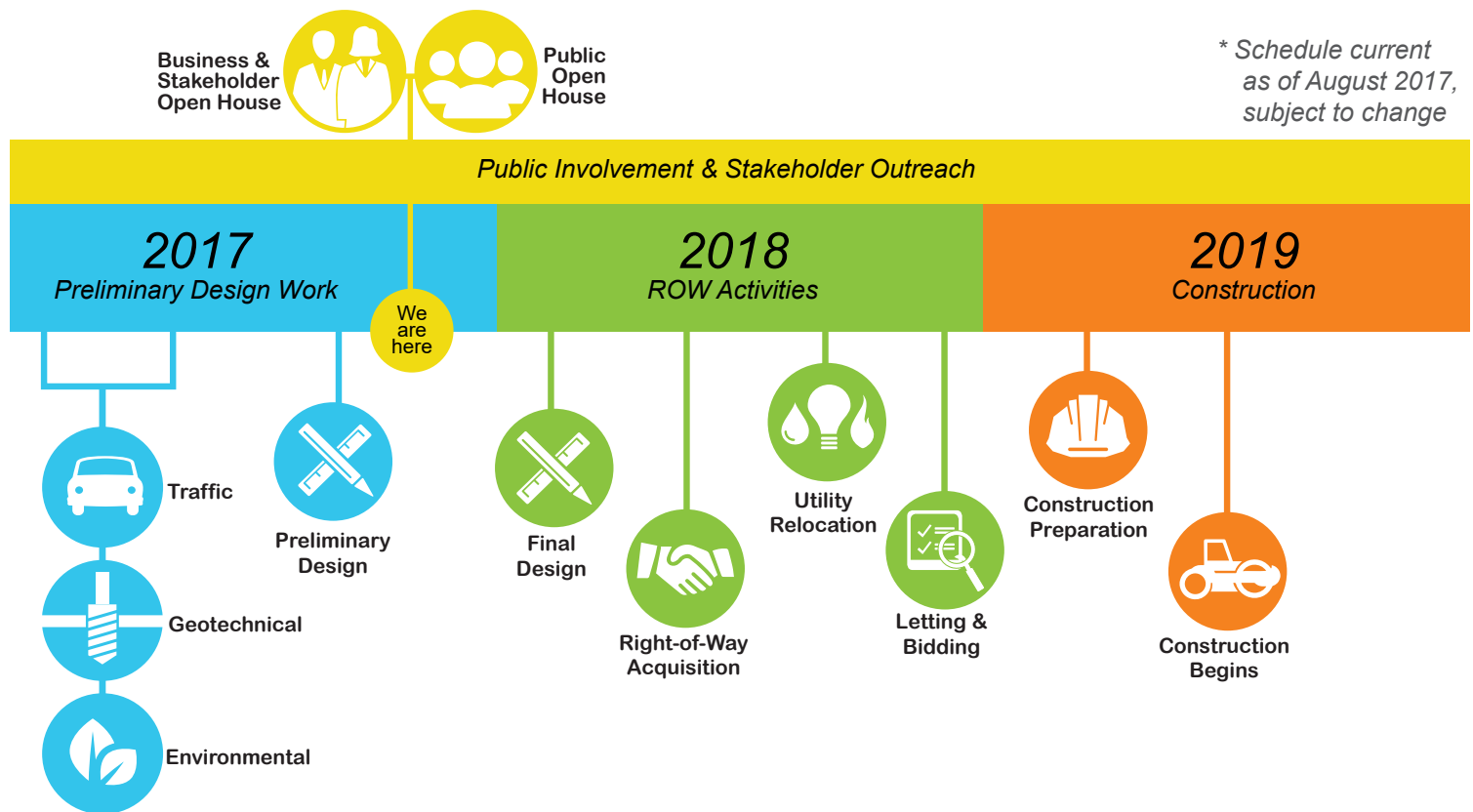
72nd St & Maple St Intersection Improvement, Omaha

HSIP-64-7(127); CN 22702

Project Timeline

The 72nd & Maple Street project is currently in preliminary design. During this phase, the team is working to gather information and perform analyses related to noise, traffic, soils and environmental features.

During the right-of-way phase, plans are developed to relocate utilities, acquire necessary right-of-way, finalize design and develop bid packages for contractors. The first visible sign of activity is anticipated to occur in 2018 when utilities are relocated. The first phase of roadway construction is anticipated to begin in 2019. The project is estimated to take one construction season.



We Need Your Input!

We encourage you to provide comments by **September 15, 2017**.

Complete a  Comment Form

Send us an Email: 
Info@KeepOmahaMoving.com

Visit us Online: 
www.KeepOmahaMoving.com

Stay informed throughout the project by visiting **www.KeepOmahaMoving.com**. Project news, highlights and construction updates will be posted as they become available.


www.KeepOmahaMoving.com



U.S. Department of Transportation
Federal Highway Administration

