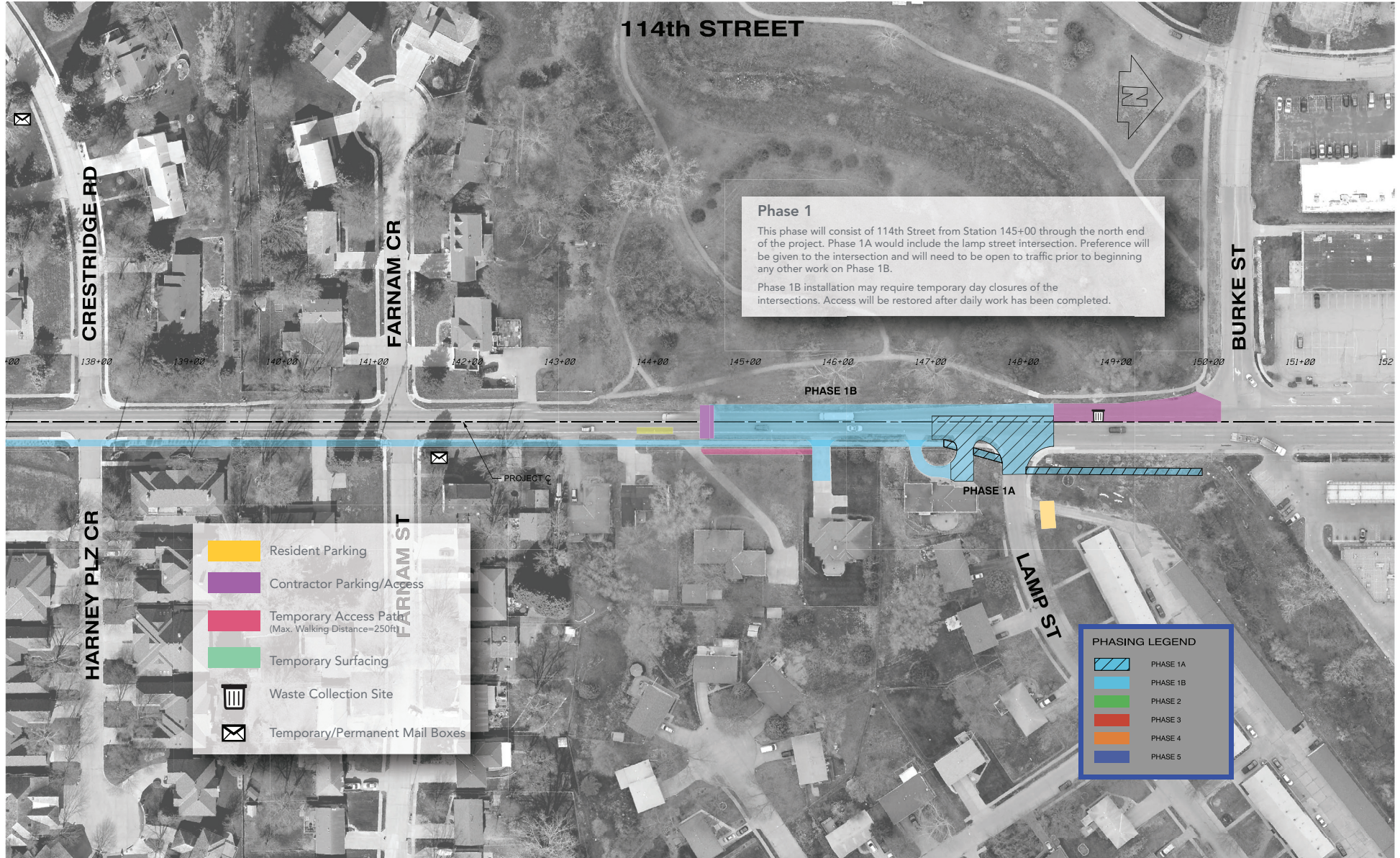




# 114th Street Improvements

from Pacific Street to Burke Street

## PHASE I











## Phase 2

This phase will begin north of Jones Street and end at station 145+00. The north half of the Farnam Circle will be included in this phase. Residents on Farnam Circle will access their homes via the south half of the street. The south half of the Harney Plaza Circle intersection will be included in this phase as well. Residents will access their homes via the north half of the intersection.

Both Jackson Street and Meadow Road will be constructed in this phase.

-  Resident Parking
-  Contractor Parking/Access
-  Temporary Access Path  
(Max. Walking Distance=400ft)
-  Temporary Surfacing
-  Waste Collection Site
-  Temporary/Permanent Mail Boxes

## PHASING LEGEND

- |   |          |
|---|----------|
|  | PHASE 1A |
|  | PHASE 1B |
|  | PHASE 2  |
|  | PHASE 3  |
|  | PHASE 4  |
|  | PHASE 5  |



# 114th Street Improvements from Pacific Street to Burke Street

## PHASE 3





# 114th Street Improvements from Pacific Street to Burke Street

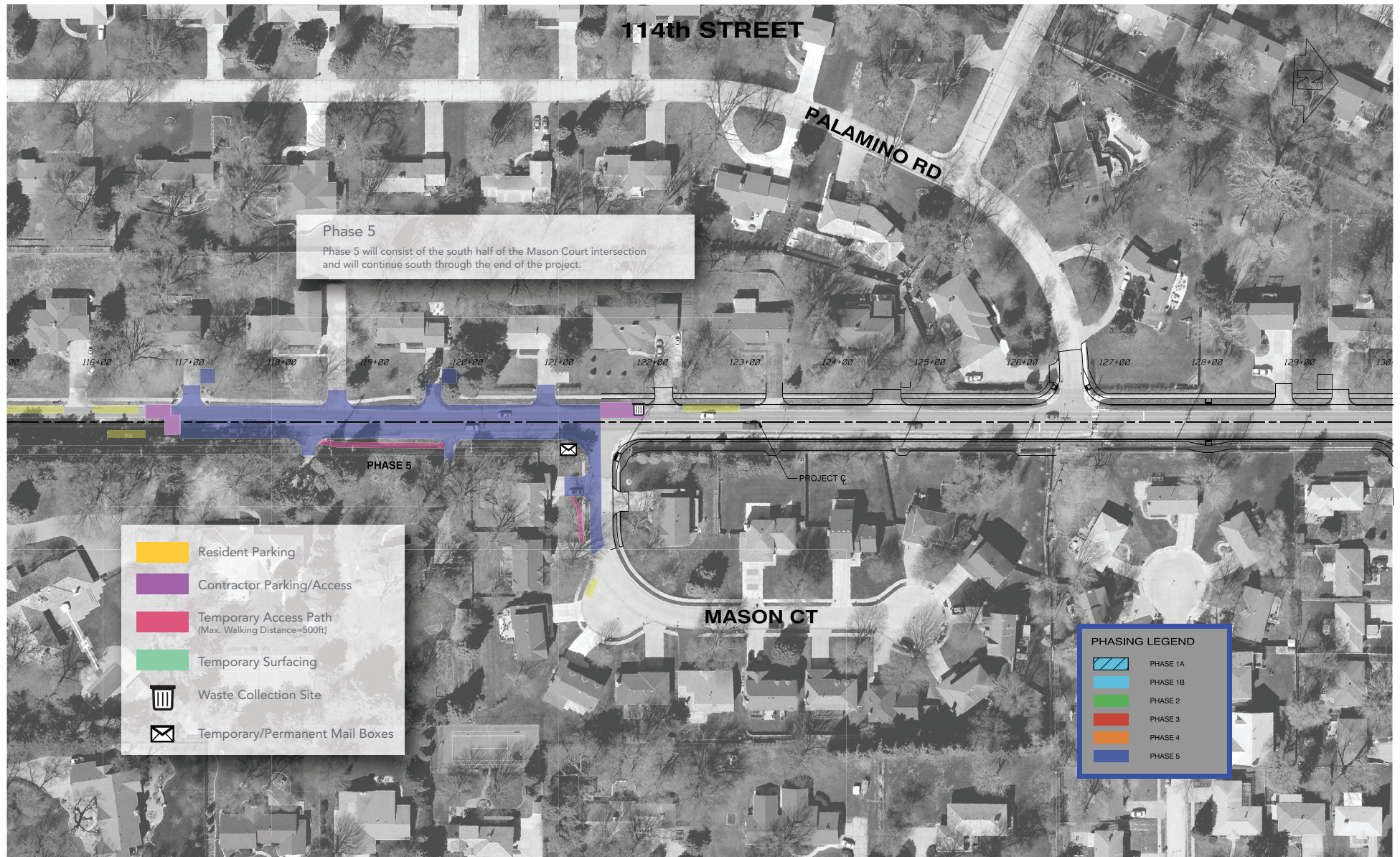
## PHASE 4





# 114th Street Improvements from Pacific Street to Burke Street

## PHASE 5





# 114th Street Improvements

from Pacific Street to Burke Street

## PROJECT PHASING AND SCHEDULE

