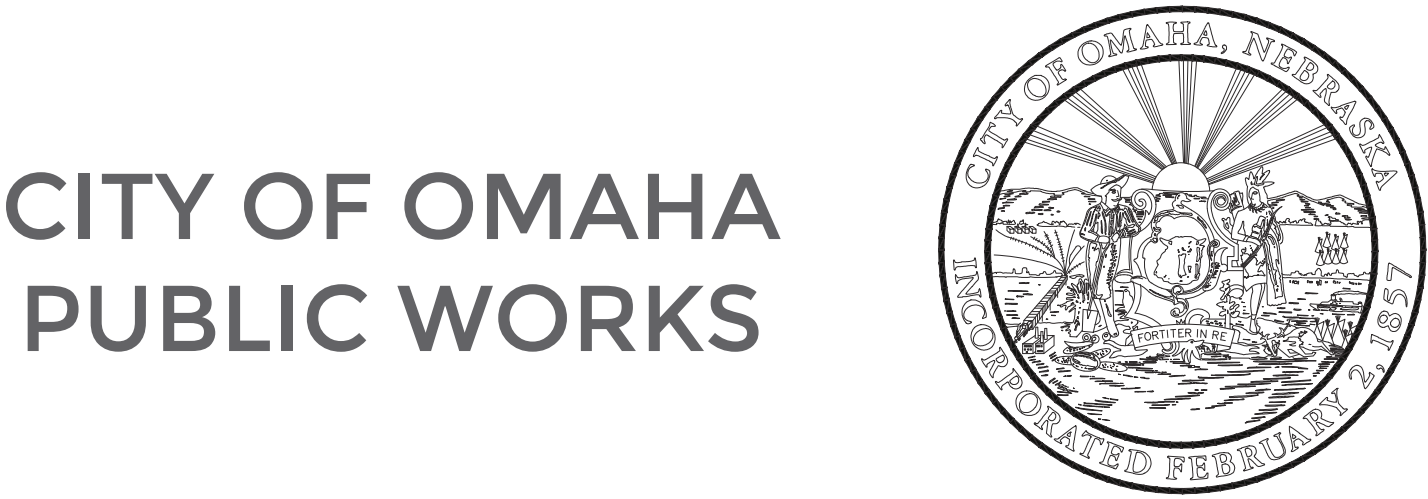


THE PLANNED IMPROVEMENTS

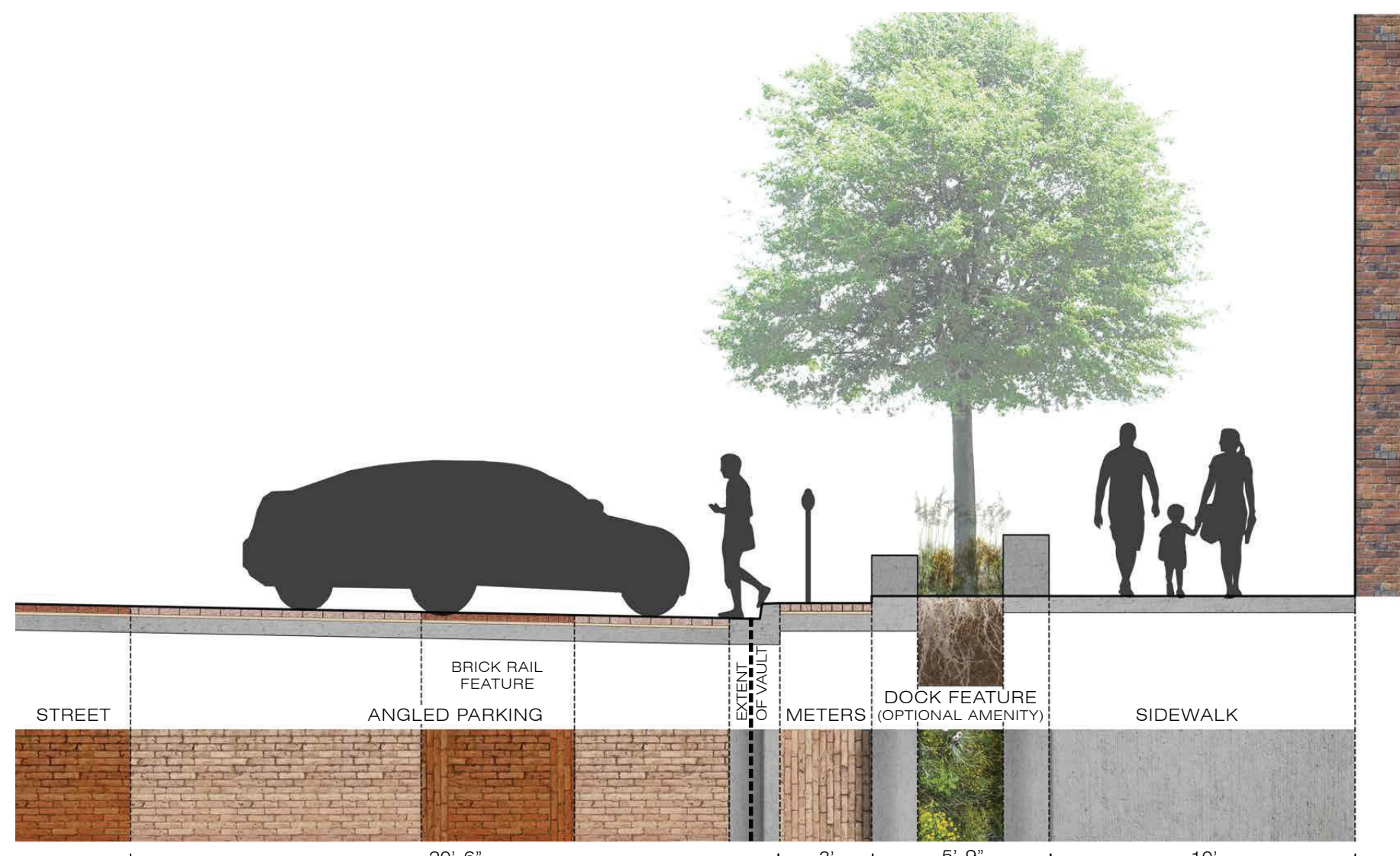


This design concept was selected as the preferred alternative of the four concepts that sought to address city and stakeholder goals.

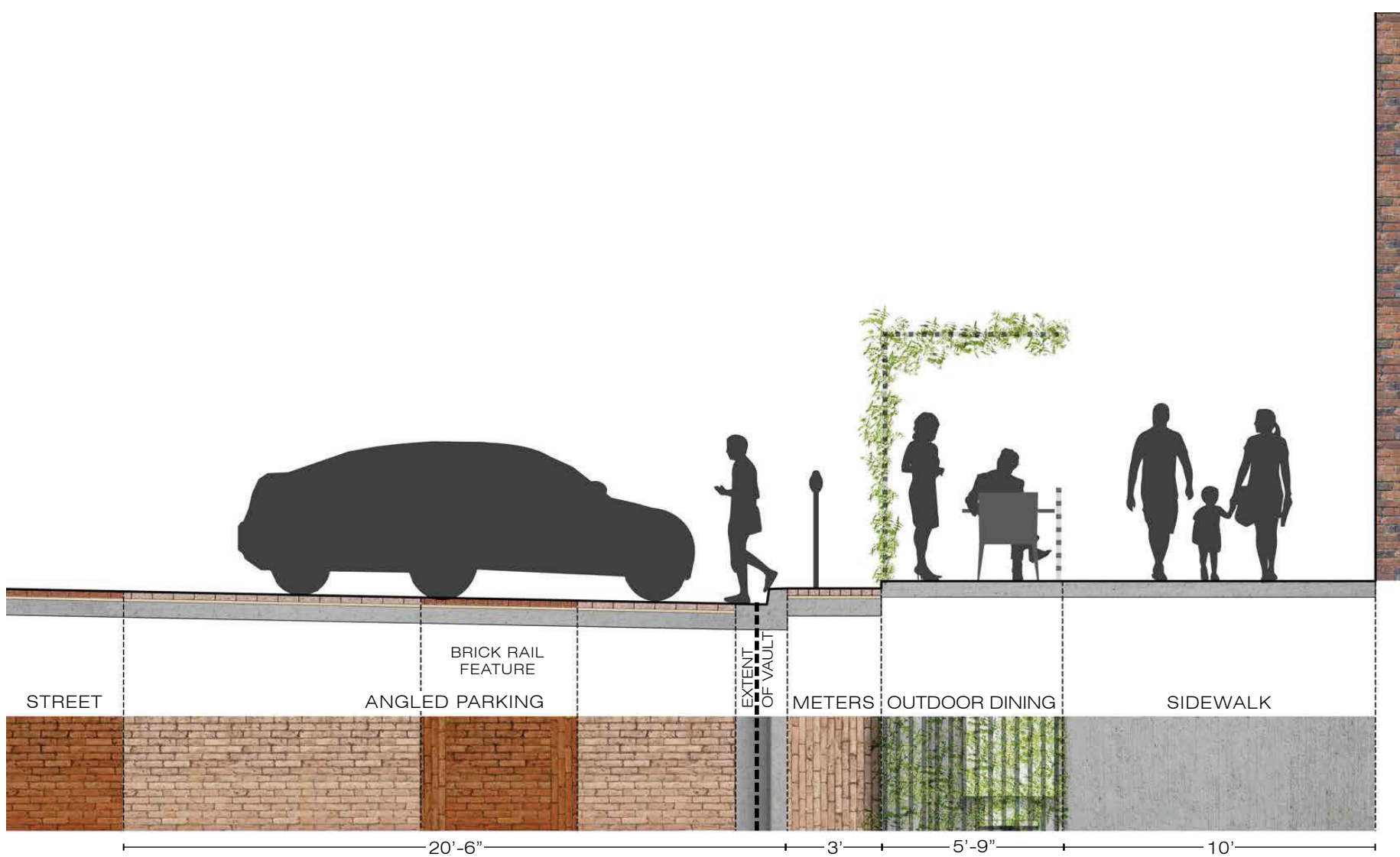
Retrofit & Replace

- Repairs roadway conditions
- Interpretive historic preservation
- Improves sidewalk conditions, narrows pedestrian crossing distance
- Creates significant planting space
- Establishes parallel parking, except for south side of Jones Street between 12th and 13th

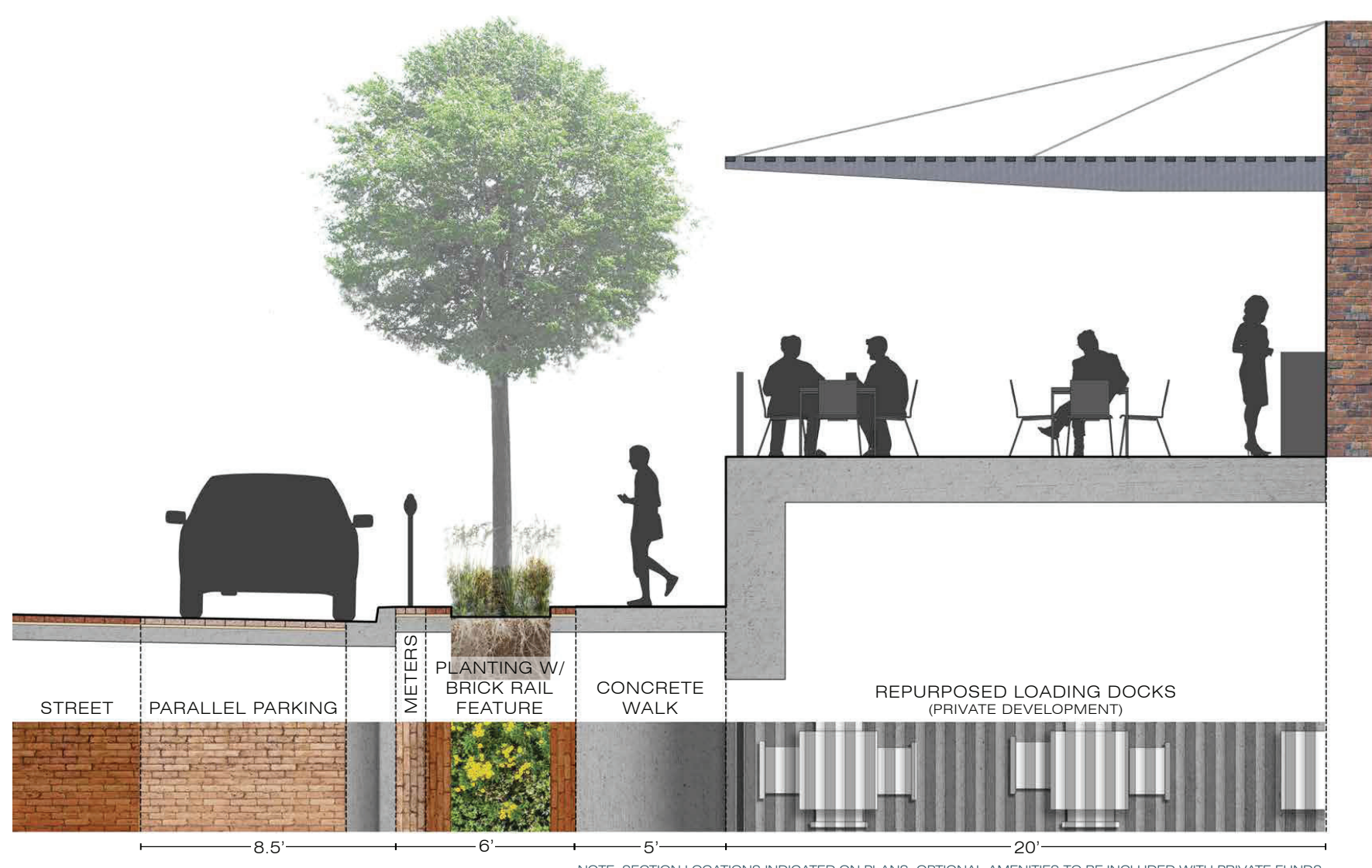
Streetview



Angle parking with dock feature on Jones St between 11th and 12th

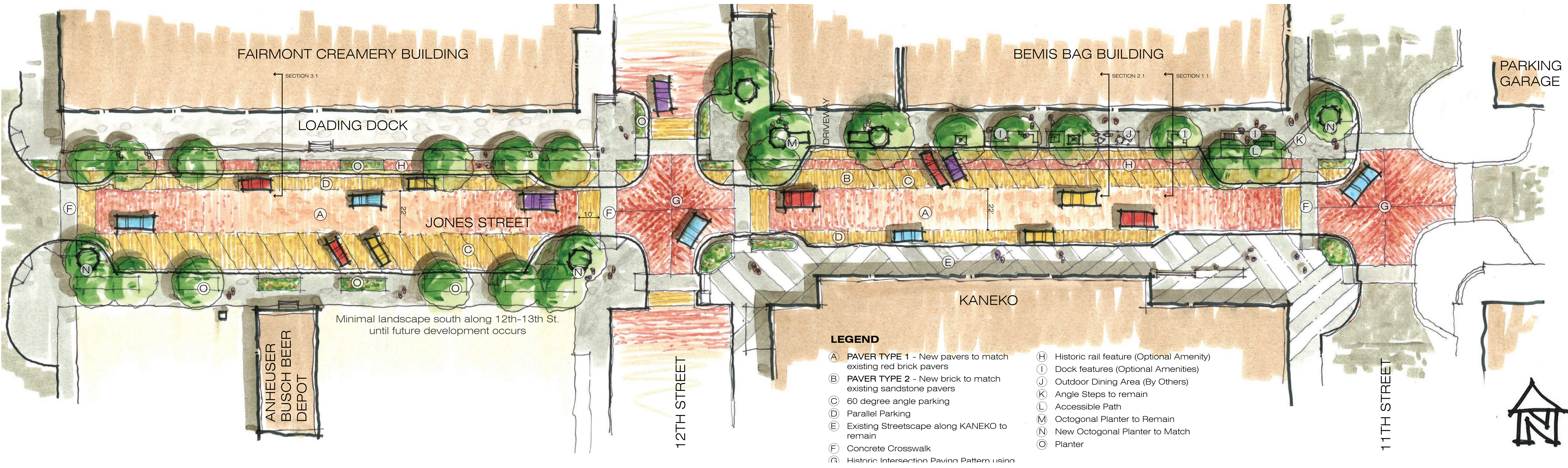


Angle parking with outdoor dining on Jones St between 11th and 12th



Repurposed loading dock on Jones St between 12th and 13th

Aerial Sketch



Your input will help refine the project design.

Public-private partnership can help bring about optimal design features.