



**156<sup>TH</sup> STREET  
RECONSTRUCTION –  
PACIFIC ST. TO WYCLIFFE DR.**

**PUBLIC INFORMATION MEETING**

February 14, 2019



# 156<sup>TH</sup> STREET RECONSTRUCTION PROJECT

Pacific Street to Wycliffe Drive

City of Omaha Project OPW 50157

## AGENDA

- Introductions
- Project Overview
- Proposed Improvements
- Noise Analysis
- General Schedule
- Stay Informed



# INTRODUCTIONS

## CITY OF OMAHA

- City Engineer
- Design Engineer
- Project Manager
- Traffic Engineer
- ROW Staff
- Construction Engineer



## DESIGN CONSULTANT

- Project Manager
- Lead Designer
- Project Team



# PROJECT OVERVIEW

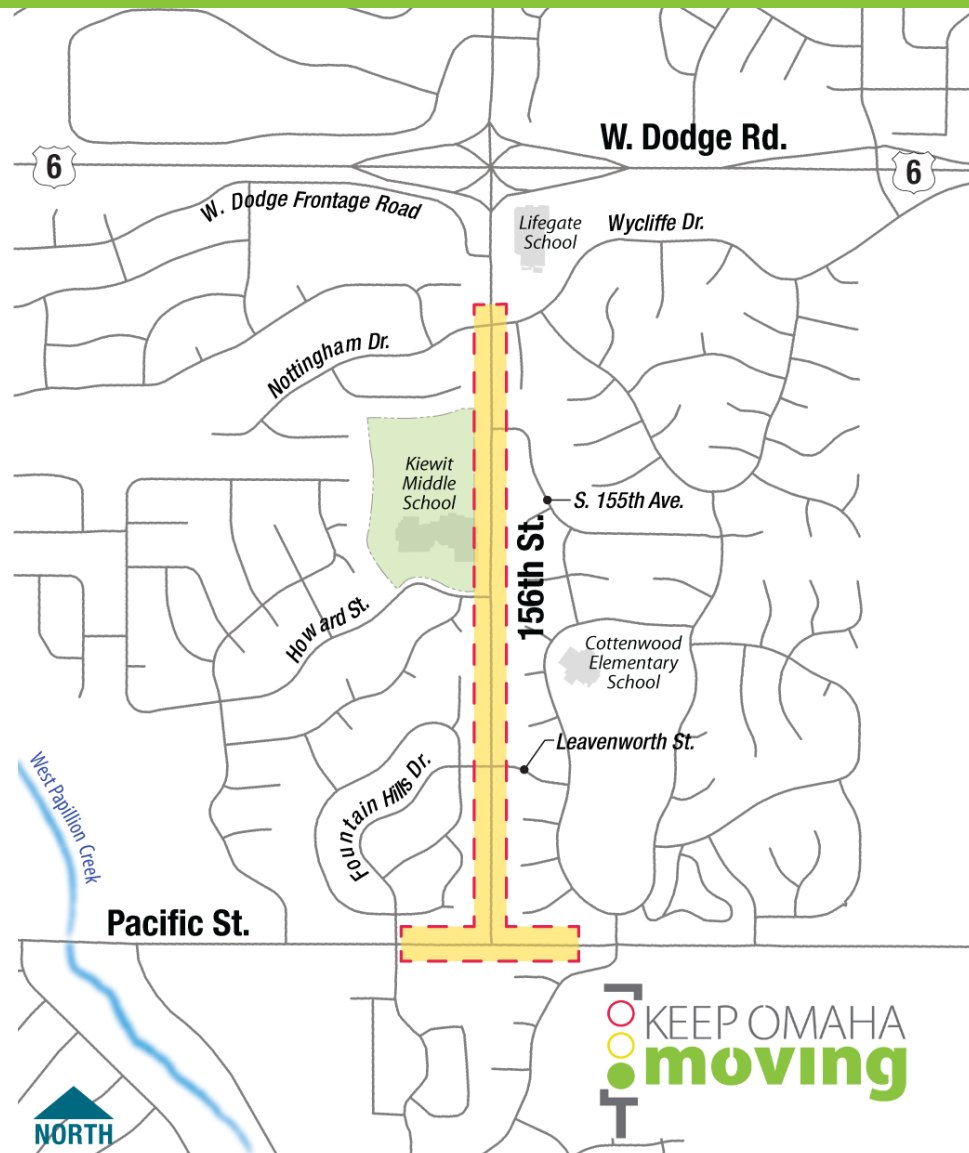
## Project Purpose

- ⚠ Increase safety
- ↔ Increase capacity
- ➡➡➡ Decrease congestion

## Project Background

The project will:

- Widen to a 4-lane divided urban section
- Pacific Street to Wycliffe Drive
- New turn lanes, sidewalk and traffic signals



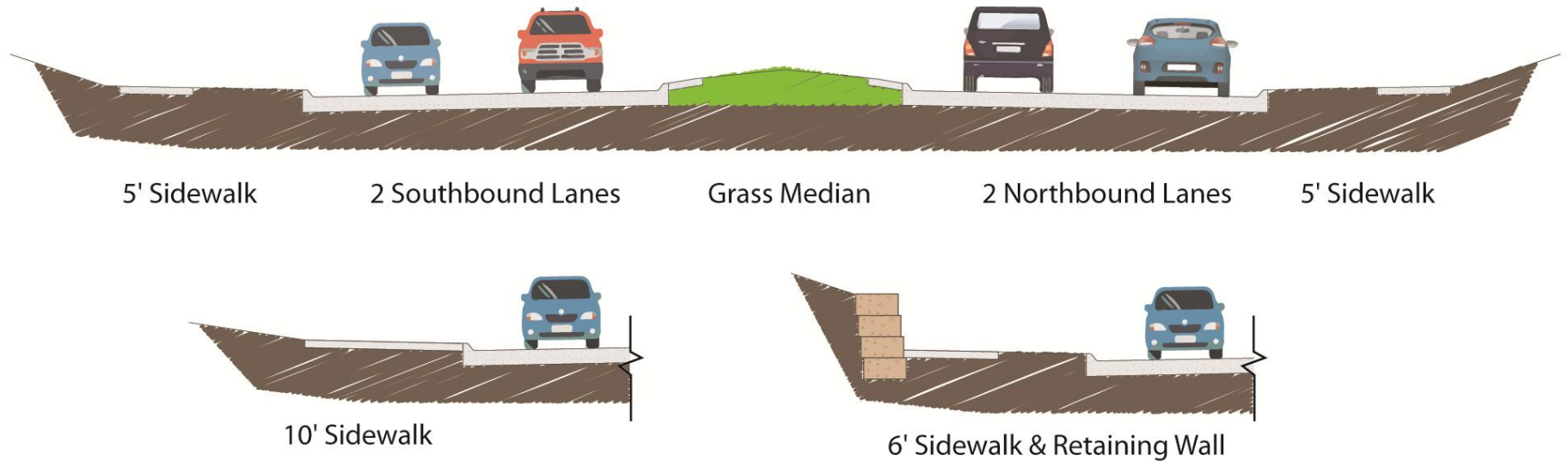
# PROJECT OVERVIEW



- Alternatives Analysis
  - Pacific Street Section
  - Alignment Alternatives
  - Sidewalk Alternative Analysis
  - Kiewit Middle School Access

# PROJECT CROSS-SECTION

## 156TH STREET

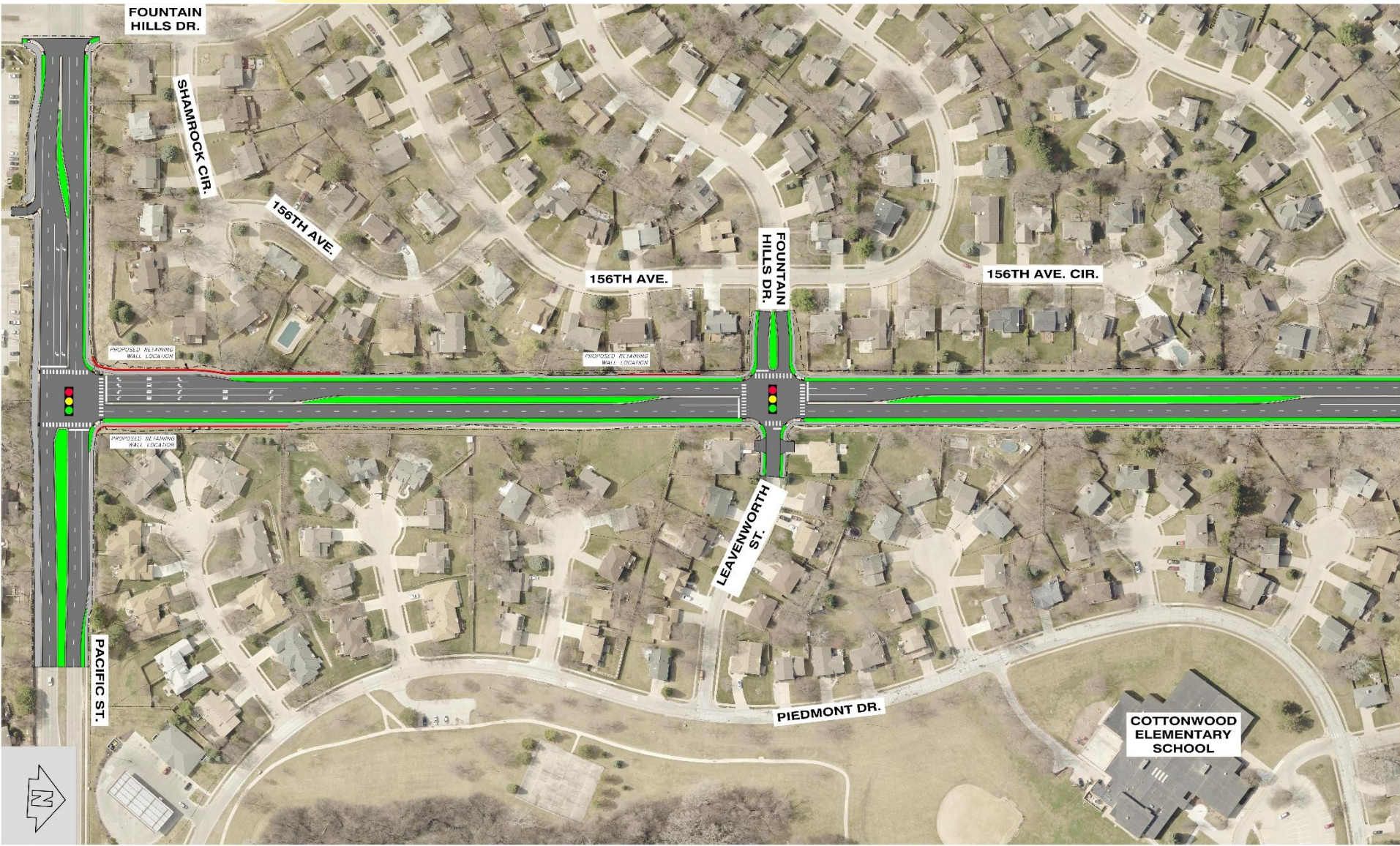


# PROJECT CROSS-SECTION



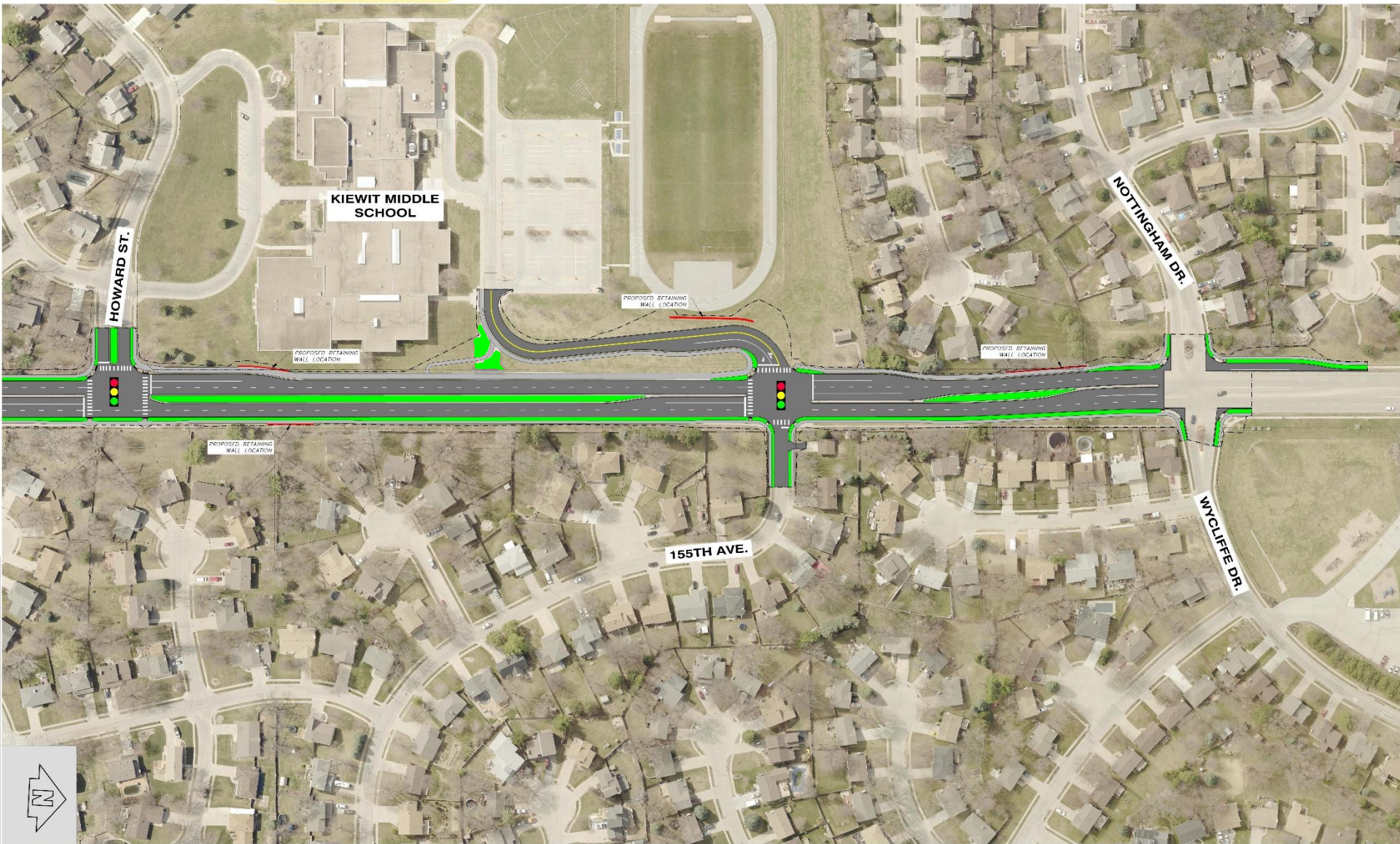
# PROJECT OVERVIEW

LOOK  
KEEP OMAHA  
moving



# PROJECT OVERVIEW

KEEP OMAHA  
moving



# CONSTRUCTION



## PHASING

- Pacific Street
  - Constructed Under Traffic
- 156<sup>th</sup> Street
  - Evaluating Options
    - Summer Closures Considered
- Utility Work will be Coordinated with Utility Providers

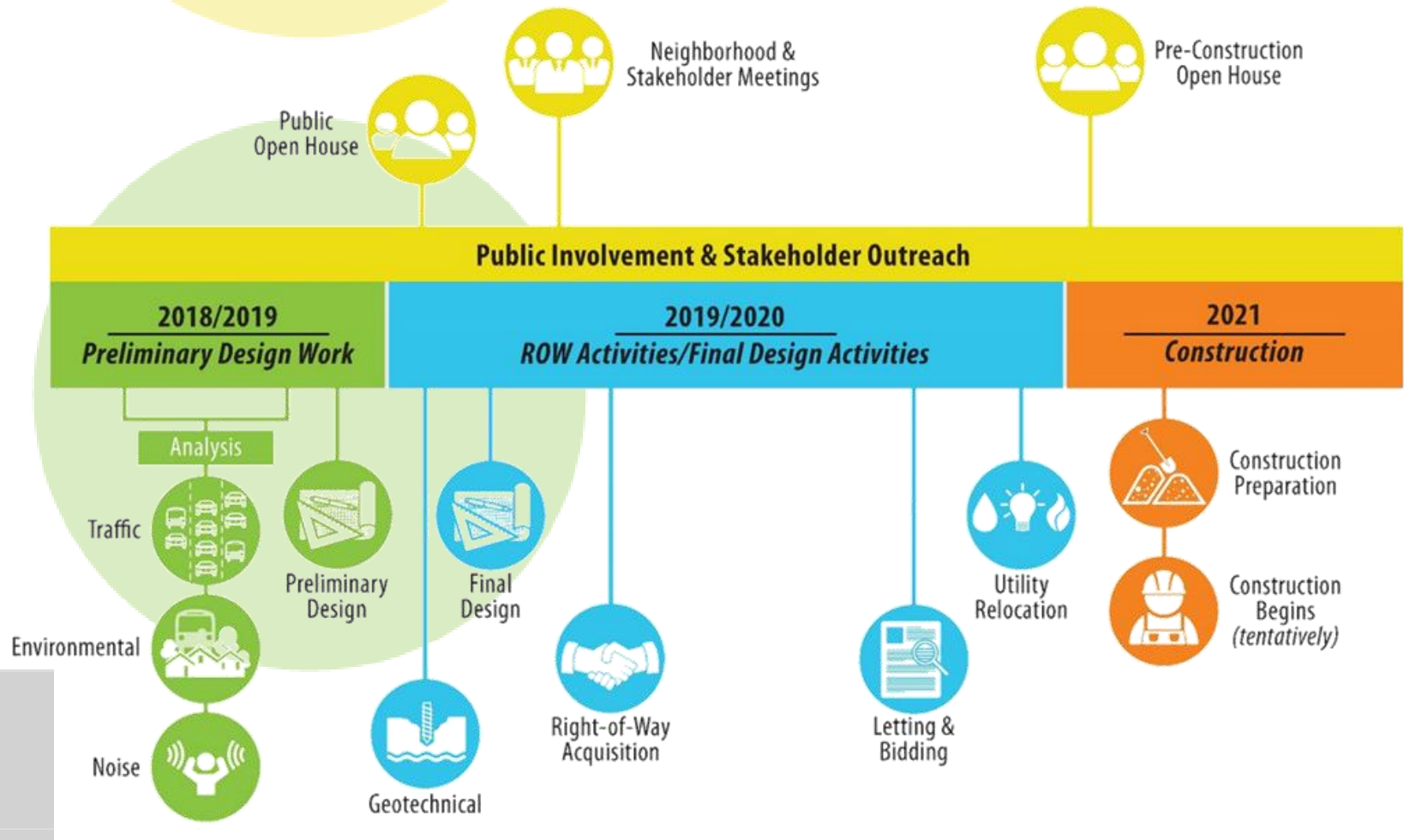
# NOISE ANALYSIS PROCEDURE

## METHODOLOGY

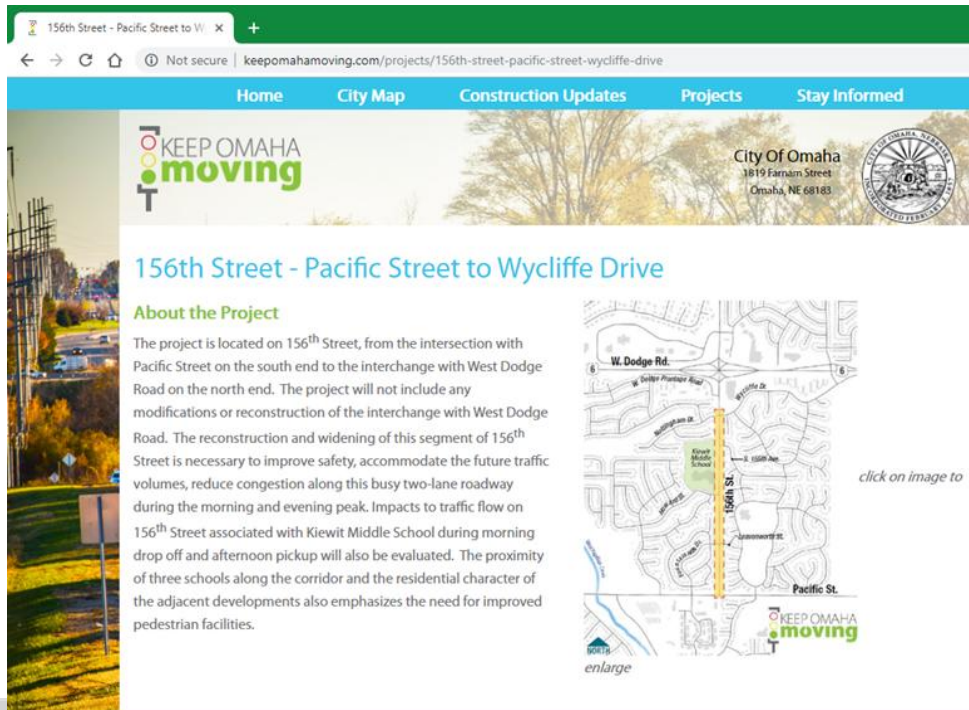
- Model existing noise levels
- Verify model with actual readings
- Model future noise levels
  - Uses future traffic volumes (2040)
  - Uses proposed design
- In accordance with NDOT policy



# SCHEDULE



# THANK YOU FOR ATTENDING



[www.KeepOmahaMoving.com](http://www.KeepOmahaMoving.com)

## STAY INFORMED

**City of Omaha Contact:**  
**Jon Meyer, PE**  
Design Division  
Public Works Department  
(402) 444-5220  
[jon.meyer@cityofomaha.org](mailto:jon.meyer@cityofomaha.org)

