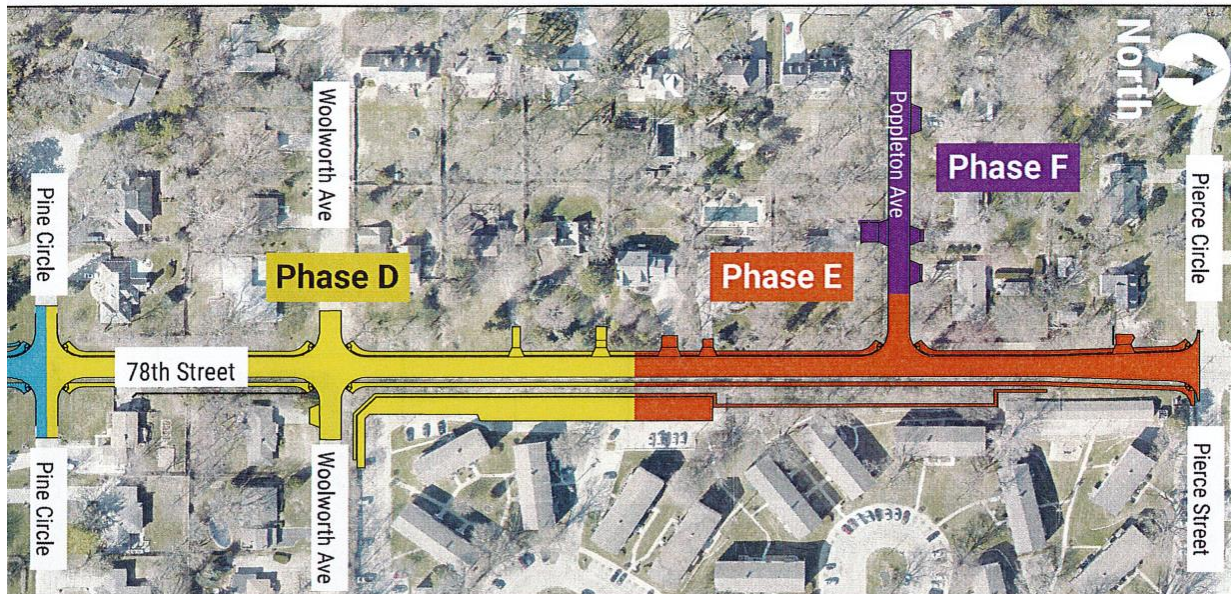


78TH STREET IMPROVEMENTS • MERCY ROAD TO PACIFIC STREET

78TH STREET PROJECT PHASING

Updated 6-2021



Phase D – Beginning Wednesday June 30th, the intersection of Woolworth Avenue and 78th Street will close to traffic. Removals and the start of Phase D will begin in/around June 30th. Resident driveways affected inside Phase D will park their vehicles on the south end of the new Phase E pavement. A temporary walking path will also be provided to homes affected.

Phase E – Work continues to progress inside this phase and will be substantially complete by mid-July with exception to seeding /sodding and miscellaneous items. Residents currently affected in Phase E will begin to have access to their properties once again by no later than June 30th.

Phase F - Poppleton Avenue west of 78th Street – Completed in 2020